

Import Belgium & Luxembourg

Profilex s.a.

4A, Z.I. In den Allern
L-9911 Troisvierges

Tel: 00352/99 89 06
Fax: 00352/26 95 73 73

www.profilex-systems.com

profilex@pt.lu

5

SAFETY SYSTEM



MACHINE PROTECTION - EXAMPLES



Workstation with security guards
for high temperature applications



Enclosure for
laser application



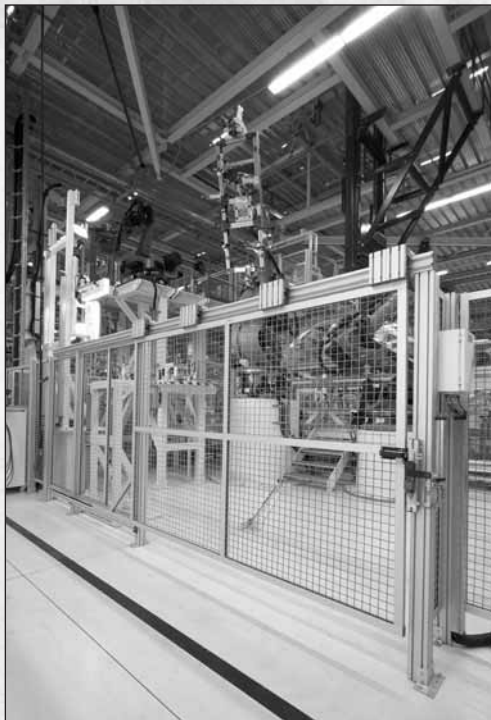
Guard unit for machine
protection

MACHINE PROTECTION - EXAMPLES

Safety guard for
a full production system



Safety fence with
sliding door



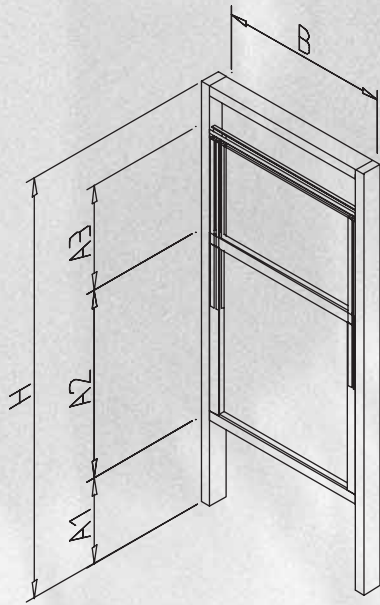
Safety guard in final
assembly of car factory



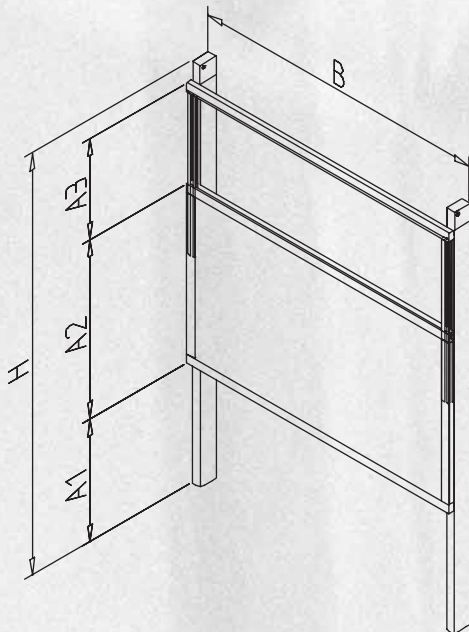
LIFTING-DOOR FOR MACHINE PROTECTION

Completely assembled and ready for installation on your premises. Vertical profiles with 2 counterweights and cable pulleys.

Lifting door for workstation



Lifting door for machine protection



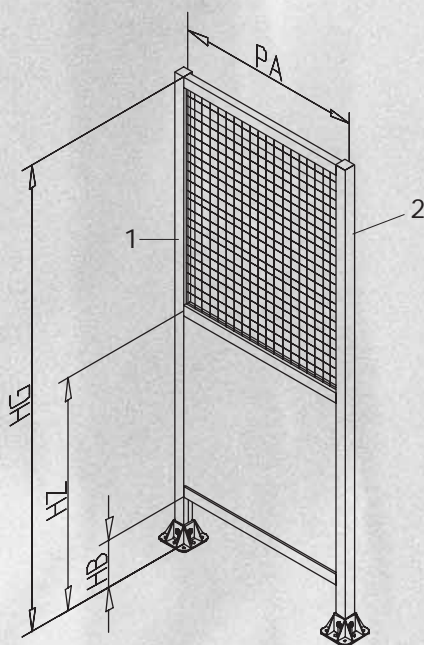
GUARD UNIT FOR MACHINE PROTECTION

Guard unit with integrated frame

Items supplied:

- 1 vertical pillar profile (1)
- 2 horizontal clamp profiles
- 1 panel element, assembled:
- Corrugated mesh, mesh 40 mm, wire size 4 mm, zinc plated

The vertical profile (2) belongs to the next unit. When used as a single element order one additional vertical profile.

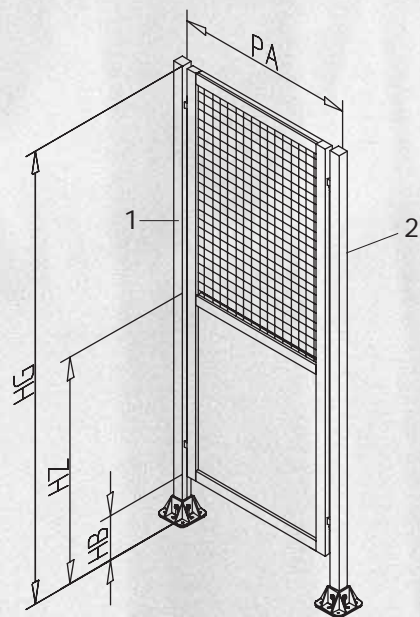


Guard unit with exchangeable panel element

Items supplied:

- 1 framed panel element, assembled:
corrugated mesh, mesh 40 mm, wire size 4 mm, zinc plated
- 1 vertical pillar profile (1) with floor-fixing and
2 guard unit fixing angles.

The vertical profile (2) belongs to the next unit. When used as a single element, order one additional vertical profile.



MACHINE PROTECTION REQUEST FOR OFFER

Lifting door

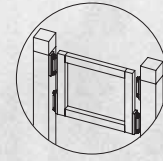
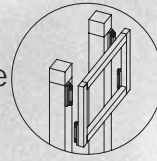
Lifting door arrangement

☐

Outside

☐

Inside



Lifting field width B

mm

Lifting field height A2

mm

Stroke A3

mm

Stand-up dimension A1

mm

Actuation

☐

Manual

☐

Pneumatic

Panel element

Part no.

Strokes per hour

Additional fixed element

Top

☐

yes

☐

no

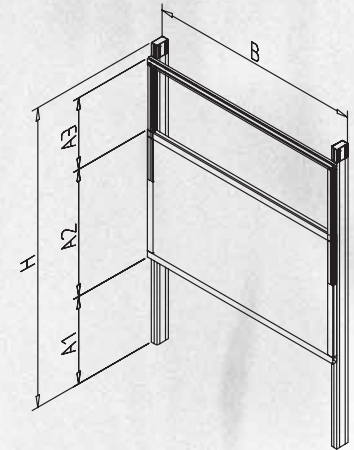
Bottom

☐

yes

☐

no



Guard unit

Protective field frame

☐

Fixed

☐

Changeable frame

Total height HG

mm

Clearance from floor HB

mm

Post spacing PA

mm

Intermediate strut

☐

yes

☐

no

High strut HZ

mm

Panel element, top

Part no. (e.g. mesh, acrylic, PVC)

Panel element, bottom

Part no. (e.g. mesh, acrylic, PVC)

Feet

☐

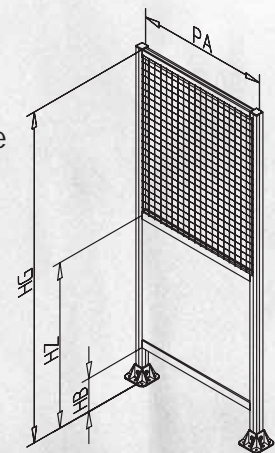
Base foot

☐

Base plate

☐

Without



Company

☐

Please call me back

Name

☐

Please send me an offer

Phone no.

Fax no.

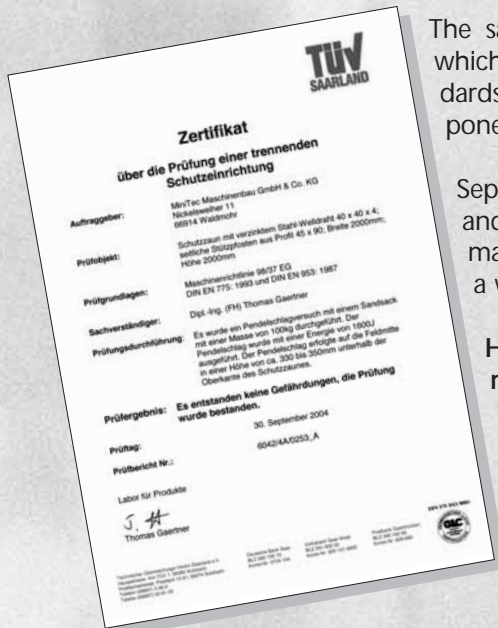


SAFETY SYSTEM
SAVEGUARD

HS=1800

MiniTec Safety system SaveGuard

Individual safety installations are a frequent application of the comprehensive MiniTec profile system. Our MiniTec CADmenue design software allows you to design and calculate separating safety installations within the shortest time. They are precisely adjusted to customer's needs, with high demands made on safety standards visual appearance. All components for designing individual protection fields, doors, lifting doors, sliding doors etc. are specified in our MiniTec Profile System main catalogue.



The same components were used to develop our standardised modules which provide especially cost-effective solutions taking account of the standards 98/37/EG, EN ISO 12100-1 / EN ISO 12100-2 and EN 953. All components used meet the requirements of DIN EN ISO 10218-1.

Separating safety installations must prevent access to the source of danger and at the same time protect against hurled-out parts, moving parts of machines and squirting liquids. The installation must be designed in such a way that it cannot be removed without tools.

However, the dimensioning of the safety installation must at any rate be preceded by a risk assessment in accordance with EN ISO 12100-1 by the manufacturer of the equipment.

Safety Distances

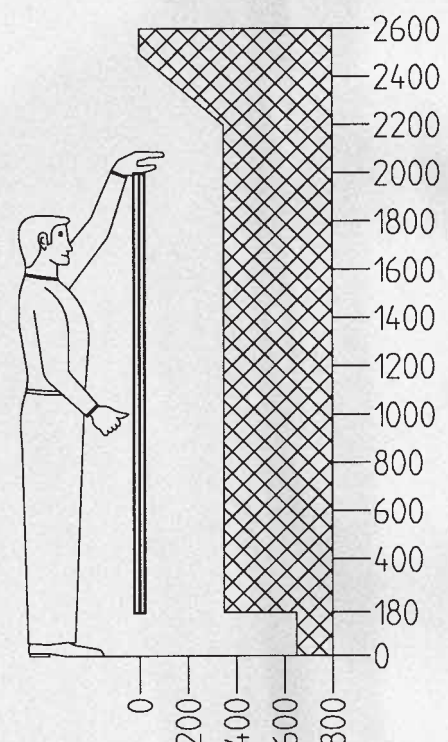
If corrugated mesh with a mesh width of 40 mm is used, then appropriate safety distances from the source of danger must be observed. The resulting distances are different if solid panel elements are used.

The necessary safety distances for upper extremities are defined in EN 13857.

Protection field Height: 2,000 mm
Distance to dangerous area: 350 mm

The safety distances for the lower extremities are defined in EN 811. The safety distance to the source of danger depends on the ground clearance of the protection field:

Protection field Ground clearance: 180 mm
Distance to dangerous area: 665 mm



Safety System SaveGuard - max Load

The load of the standard protection fields was determined in empirical trials. In the centre of the field, a 200 mm x 200 mm plate was statically loaded until the corrugated mesh was pressed out of the clamping profile. The specified values apply to protection fields made of clamping profile 32 x 32 with corrugated mesh, steel zinc plated, 40 mm x 40 mm x 4 mm.

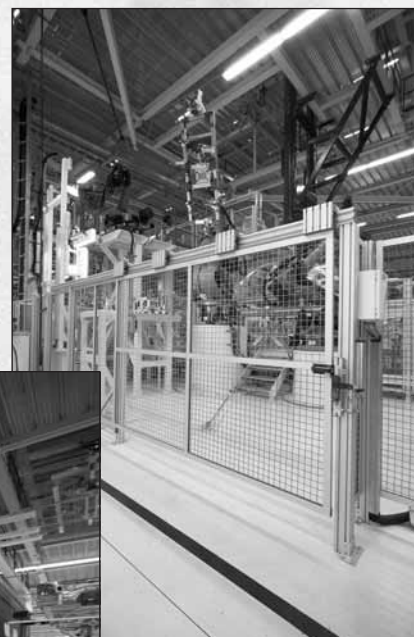
<i>Field height HS</i> <i>mm</i>	<i>Field size B</i> <i>mm</i>	<i>Load F</i> <i>N</i>
1820	500	1200
1820	750	1200
1820	1000	1000
1820	1250	1000
1820	1500	1200
1820	1750	1100
1820	2000	1000

The dynamic load rating of the protection fields was determined by TÜV-Saarland in pendulum impact tests using a mass of 100 kg. All parameters required by the machine directive 98/37 EG and DIN EN 775:1993 and DIN EN 953:1987 were complied with.



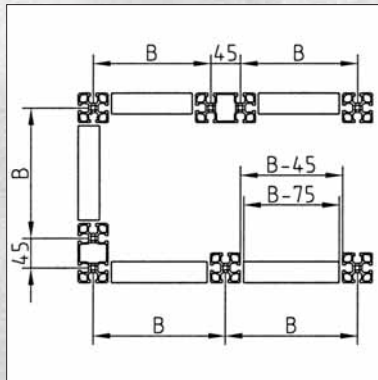
The Grid System

The standardised SaveGuard system is an especially economic and quick solution for most applications. Individual heights, field sizes, special designs for noise protection or splash water protection and optional fastening types are available for special tasks.

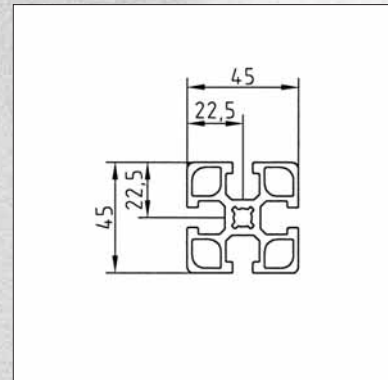
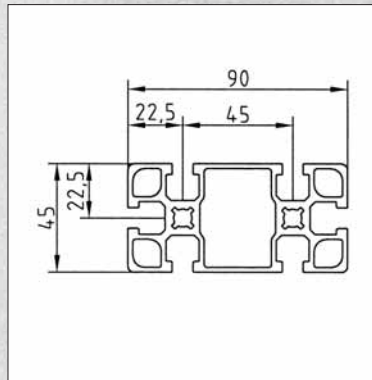


SaveGuard Standard

Widths Safety Fencing



Center To Center Distance of T-Slots „B”



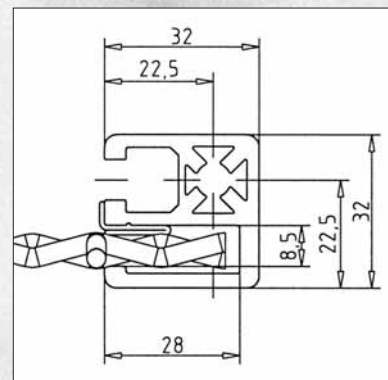
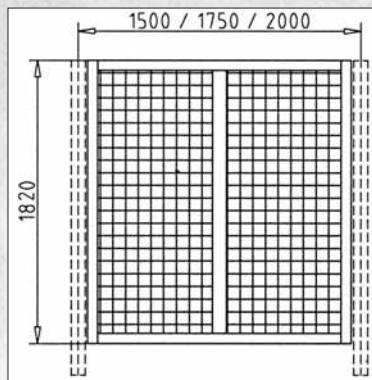
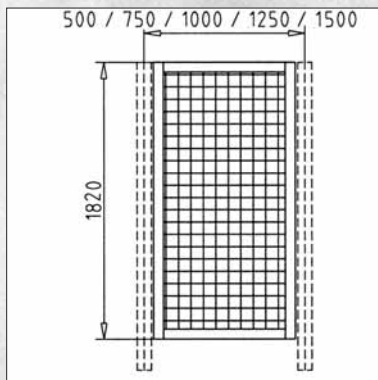
Standard widths

500, 750, 1000, 1250, 1500 mm

1500, 1750, 2000 mm with additional vertical strut

The SaveGuard frames consist of special designed clamp-profiles 32 x 32 mm. High stability through deep T-slots for panel elements and distance profile.

For add-on piece fastening all components of the MiniTec Profilsystem can be used.



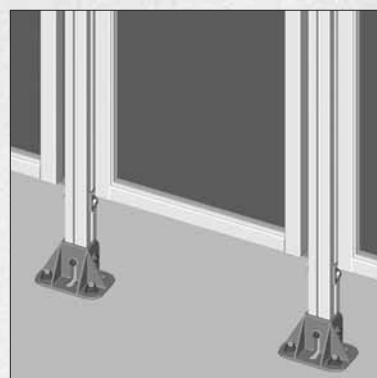
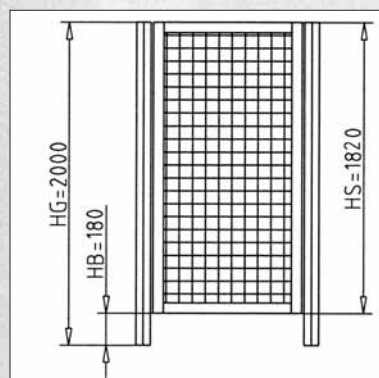
Height

Standard

Total height „HG”= 2000 mm,

Height Safety Fencing HS

1800 mm, 200 mm ground clearance for easy cleaning



Assembly

The preassembled fields can be mounted on site by just one person. With stable feet, the posts are fastened to the ground by means of heavy-duty dowels. The posts are equipped with angles into which the protection fields are hung up and screwed tight. The fields can be aligned in any direction. Oblong holes in the angles enable spacing tolerances of the posts to be equalised.





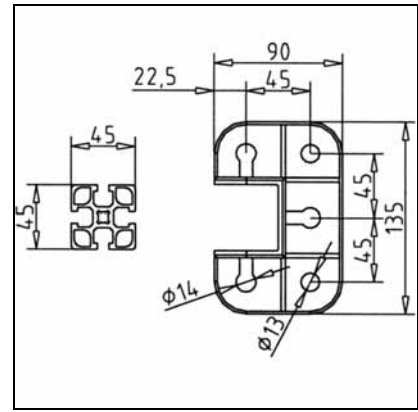
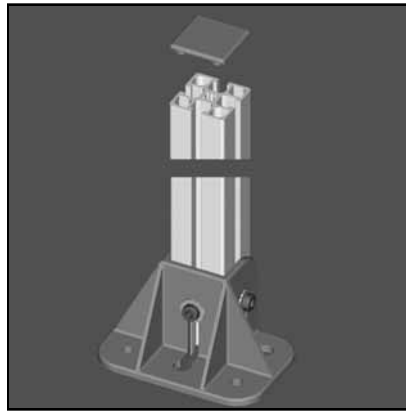
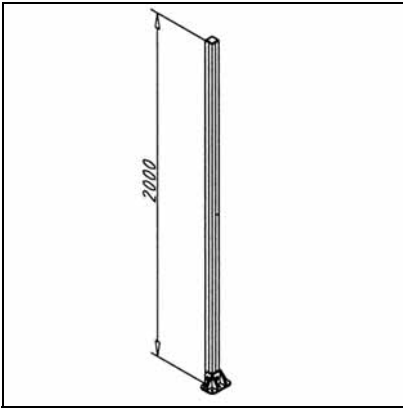
SAFETY SYSTEM SAVEGUARD COMPONENTS

HS=1800



POST SG 45 X 45

Part. N° 23.0030/0



TECH. DATA / ITEMS SUPPLIED

- Made of profile 45 x 45 F
- Foot 45 GD preassembled
- Without ground anchor

APPLICATIONS

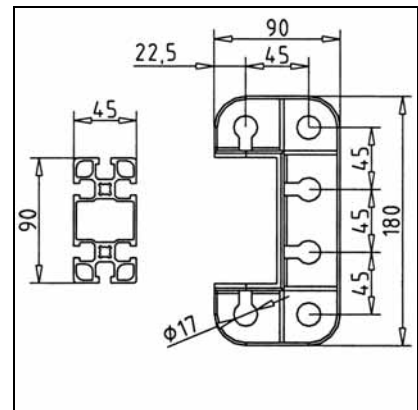
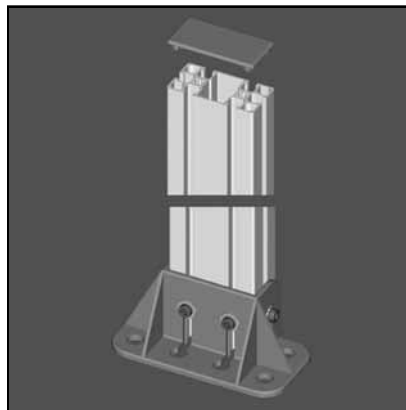
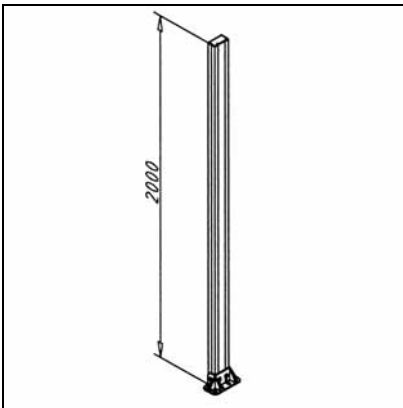
- As posts for protection fields and doors

ASSEMBLY

- Position foot as appropriate
- Mark the position of the borings on the ground
- Install and tighten the ground anchor

POST SG 45 X 90

Part. N° 23.0060/0



TECH. DATA / ITEMS SUPPLIED

- Made of profile 45 x 90 F
- Foot 90 GD preassembled
- Without ground anchor

APPLICATIONS

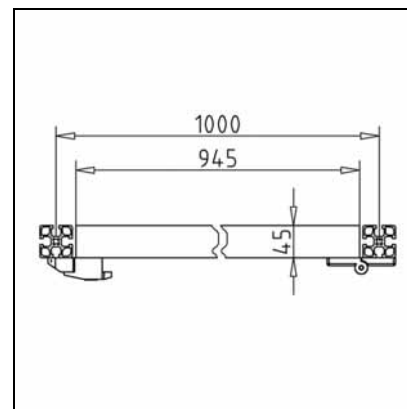
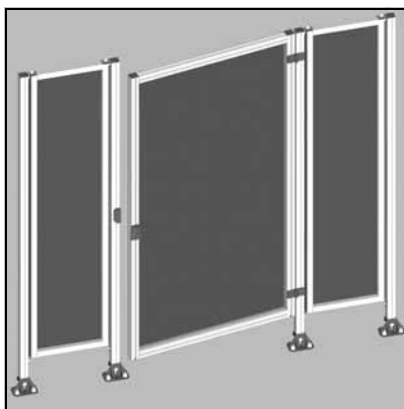
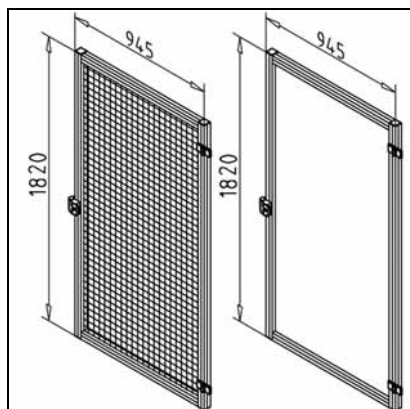
- As corner post for protection fields or in case of greater lateral loads of normal fields

ASSEMBLY

- Position foot as appropriate
- Mark the position of the borings on the ground
- Install and tighten the ground anchor

DOOR SG 1000

Part. N° 23.1404/0



TECH. DATA / ITEMS SUPPLIED

- Made of profile 45 x 45 F
- Completely preassembled with lock and hinges
- With corrugated mesh 40x40x4 mm, steel, right Part N° 23.1404/0
- With corrugated mesh 40x40x4 mm, steel, left Part N° 23.1404/1
- With PETG5, right Part N° 23.1414/0
- With PETG5, left Part N° 23.1414/1
- Further constructions on demand

APPLICATIONS

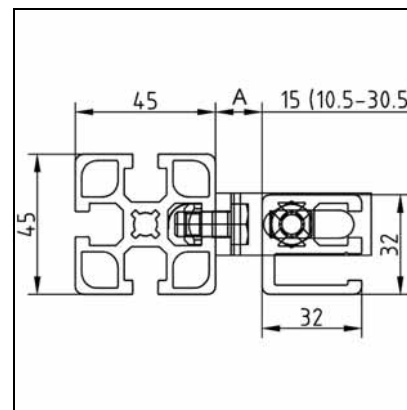
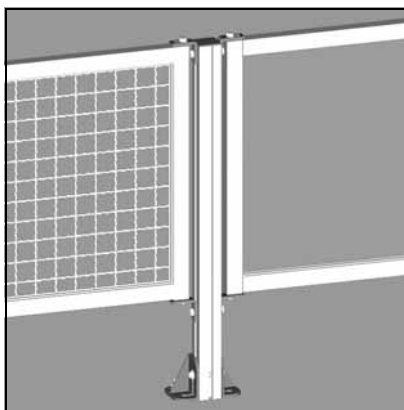
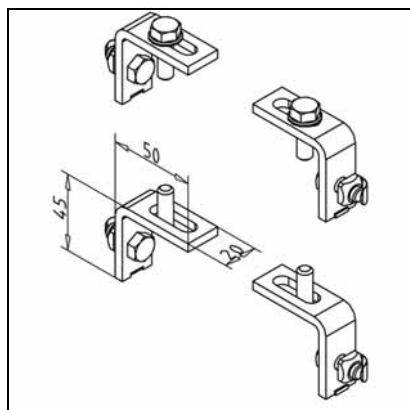
- As access to enclosures e.g. for maintenance

ASSEMBLY

- Install between two posts with groove spacing 1000
- Install lock fitting in post with two borings

FASTENING KIT 19 FOR PROTECTION FIELDS

Part. N° 23.0010/0



TECH. DATA / ITEMS SUPPLIED

- 4 protection field suspensions, galvanised steel
- With fastening material
- Weight/Piece 0,091 kg

APPLICATIONS

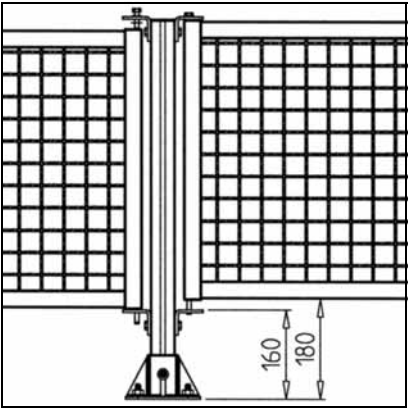
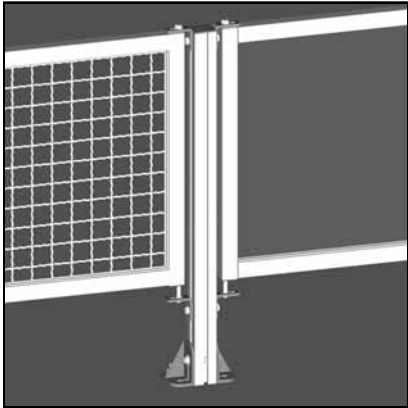
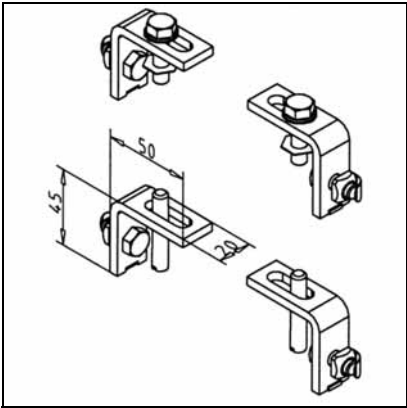
- Fastening of protection fields made of clamping profile 32x32, 45x32 or standard profiles
- Fastening of protection fields at any angle

ASSEMBLY

- Insert protection field into preassembled suspension. Tighten with screws included in delivery
- A = 10,5 mm - 30,5 mm

FASTENING KIT FOR PROTECTION FIELDS SG

Part. N° 23.0011/0



TECHN. DATA/ITEMS SUPPLIED

- 4 protection field suspensions, galvanised steel
- With fastening material
- With label: Maintenance panel
- Upper screws are in a captive design
- Weight 0,366 kg

APPLICATIONS

- Fastening safety fields that are removed for servicing purposes. The screws to be loosened here are in a captive design.
- For clamping profile 32 x 32 and 45 x 32
- Fastening of protection fields at any angle

ASSEMBLY

- Insert protection field into preassembled suspension. Tighten with screws included
- A = 10,5 mm - 30,5 mm

Field SG 500/750/1000/1250/1500

Techn. data / items supplied

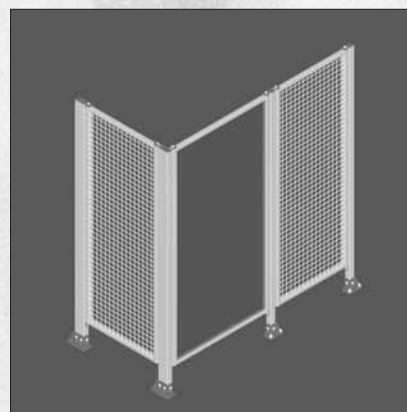
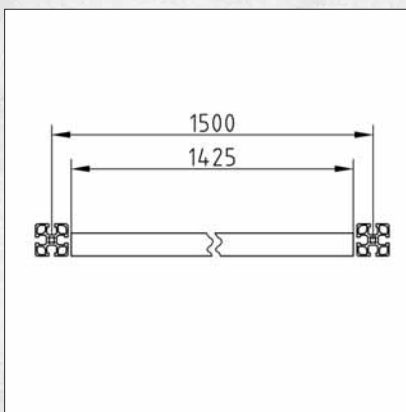
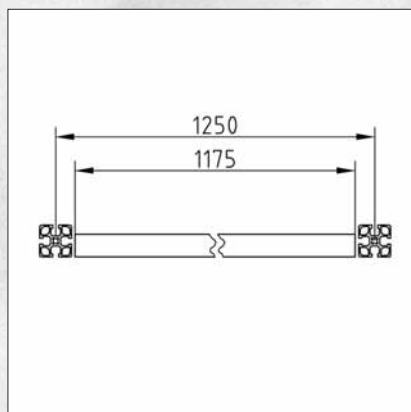
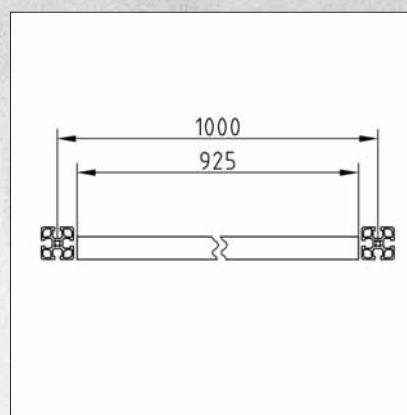
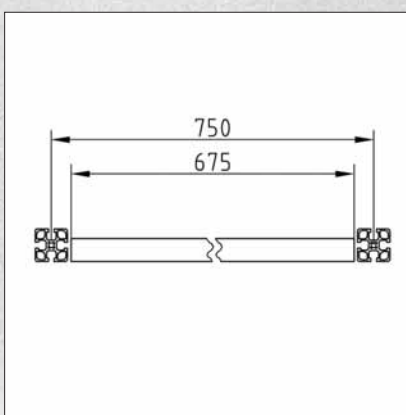
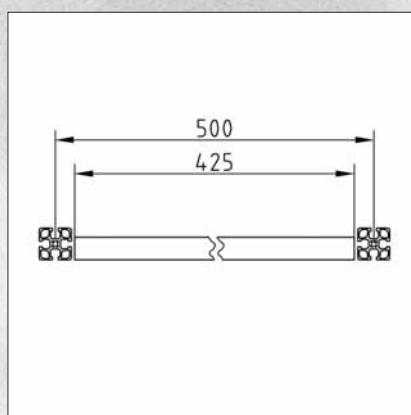
- Made of clamping profile 32 x 32 UL
- Completely preassembled
- With corrugated mesh 40 x 40 x 4 mm, galvanised steel or with PETG5
- Standard height HS: 1,800 mm

Application

- Separation of dangerous areas
- As machine protection

Assembly

- Mount protection field to protection field post using fastening kit 19 art. no. 23.0010/0.



Field size B	Corrugated mesh	PETG5
500	Part N° 23.0102/0	Part N° 23.0112/0
750	Part N° 23.0103/0	Part N° 23.0113/0
1000	Part N° 23.0104/0	Part N° 23.0114/0
1250	Part N° 23.0105/0	Part N° 23.0115/0
1500	Part N° 23.0109/0	Part N° 23.0119/0

Field SG 1500/1750/2000

Techn. data / items supplied

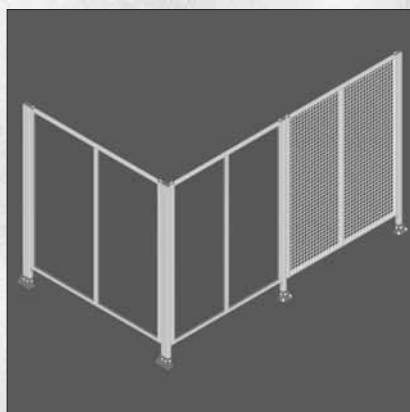
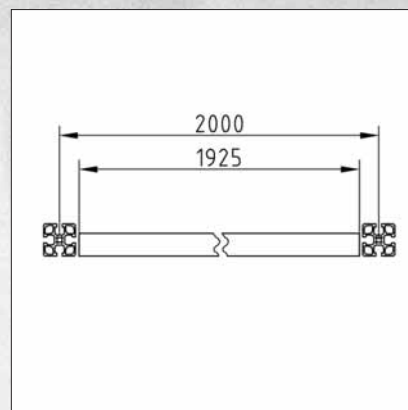
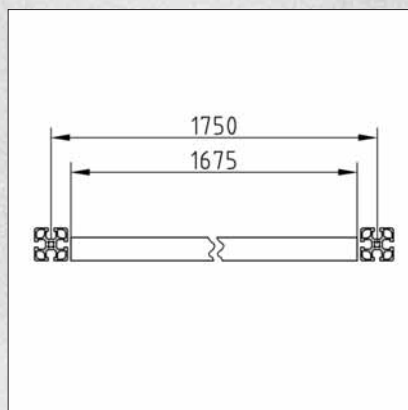
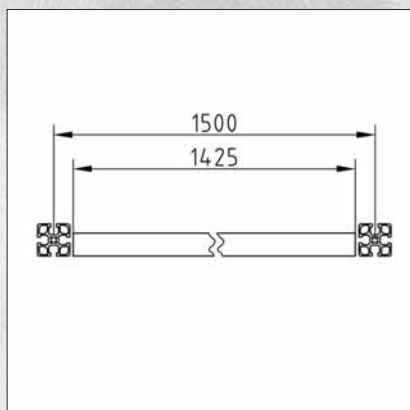
- Made of clamping profile 32 x 32 UL
- Completely preassembled
- With corrugated mesh 40 x 40 x 4 mm, galvanised steel or with PETG5
- Standard height HS: 1,800 mm
- Vertical brace, clamp profile 45x32
- Additional vertical strut

Application

- Separation of dangerous areas
- As machine protection

Assembly

- Mount protection field to protection field post using fastening kit 19 Part N° 23.0010/0.



Field width B	Corrugated mesh	PETG5
1500	Part N° 23.0106/0	Part N° 23.0116/0
1750	Part N° 23.0107/0	Part N° 23.0117/0
2000	Part N° 23.0108/0	Part N° 23.0118/0



INQUIRIES FOR
SAFETY SYSTEM
SAVEGUARD

HS=1800



INQUIRY ABOUT FITTING FIELD

Please specify ...

Height of protection field HS mm (standard 1820 mm)

Width of protection field B-75 mm

or ...

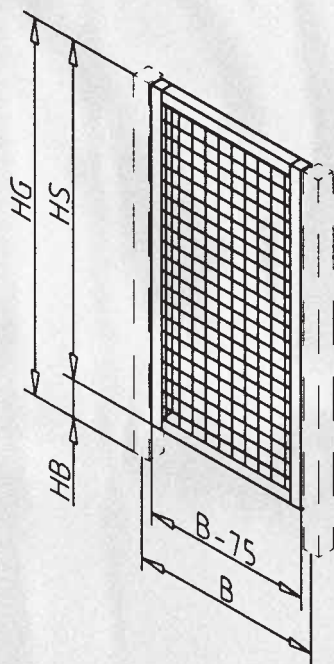
Height total HG mm (standard 2000 mm)

Ground clearance HB mm (standard 180 mm)

Groove centre spacing B mm

Panel element

☐ Corrugated mesh ☐ PETG5



Company ☐ Please call me back

Name ☐ Please send me an offer

Phone no

Fax no

E-Mail

INQUIRY ABOUT SLIDING DOOR

Post spacing B mm (standard 1000 mm)

Post height HG mm (standard 2000 mm)

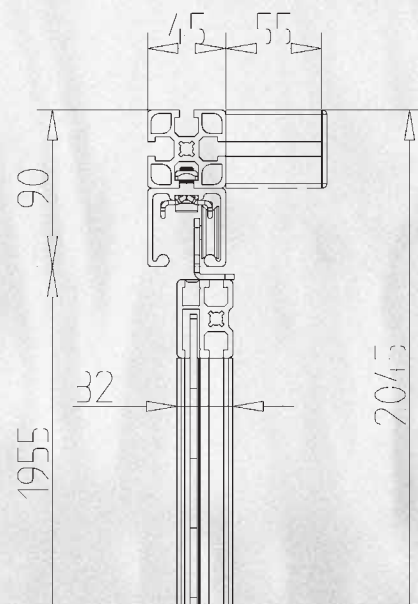
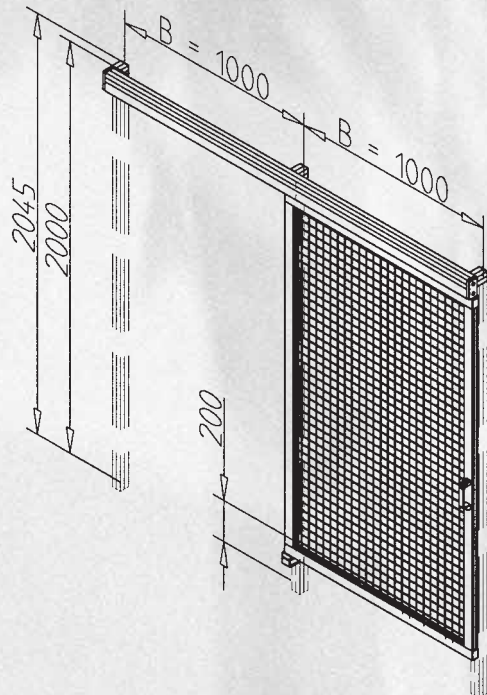
Handle ☐ one side ☐ both sides

Panel element ☐ Corrugated mesh ☐ PETG5

Additional field fixed

right ☐ yes ☐ no

left ☐ yes ☐ no



Company ☐ Please call me back

Name ☐ Please send me an offer

Phone no

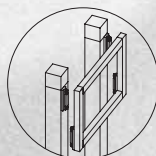
Fax no

E-Mail

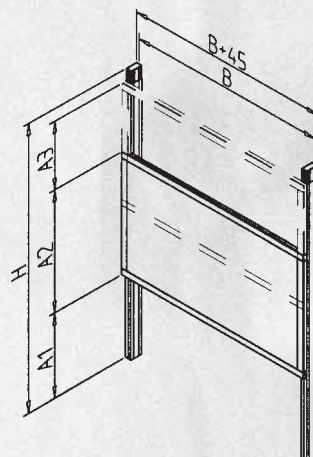
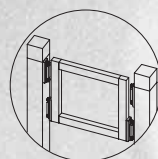
INQUIRY FOR LIFTING DOOR

Lifting door arrangement

☐ outside



☐ inside



Groove centre spacing B mm

Lifting field height A2 mm

Lift A3 mm

Stand-up dimension A1 mm

Actuation ☐ manual ☐ pneumatic

Panel element ☐ Corrugated mesh ☐ PETG5

Liftings per hour

Additional field fixed

top ☐ yes ☐ no

bottom ☐ yes ☐ no

Company

☐ Please call me back

Name

☐ Please send me an offer

Phone no

Fax no

E-Mail

INQUIRY BASED ON DRAWING

Company

☐ Please call me back

Name

☐ Please send me an offer

Phone no

Fax no

E-Mail