

Import Belgium & Luxembourg

Profilex s.a.

4A, Z.I. In den Allern Tel: 00352/99 89 06
L-9911 Troisvierges Fax: 00352/26 95 73 73

www.profilex-systems.com

profilex@pt.lu

MiniTec
THE ART OF SIMPLICITY

NEWS 2012

NEWS 2012

Part. N° 95.3000/2

CONTENTS

News 2012

3	SYSTEM COMPONENTS
4	PROFILE 45 X 45 1G
4	PROFILE 45 X 90 2G
5	PROFILE 45 X 45 UL 2GG
5	PROFILE 45 X 45 UL 3G
6	PROFILE 30 X 30 2G
6	PROFILE 30 X 30 3G
7	PROFILE 30 R 90°
7	SUPPORT PROFILE
8	END CAP 45 R 60° ALU
8	END CAP 45 R 30° ALU
9	END CAP 30 X 30 ALU
9	END CAP 90 X 90 ALU
10	FIXING PLATE 45 VA FOR FIXED CASTORS
10	BASE AND TRANSPORT PLATE 45X45 VA M10
11	BASE AND TRANSPORT PLATE 30X60 M08
11	BASE AND TRANSPORT PLATE 30X60 M10
12	BASE AND TRANSPORT PLATE 30X60 M12
12	CONNECTING PLATE 30 X 60
13	MONITOR CARRIER DIGITUS
13	MONITOR CARRIER WITH HINGED BRACKET
14	POWER-LOCK FASTENER SF SHORT
14	POWER-LOCK FASTENER N30
15	MITRE CONNECTOR N30
15	STRENGTHENING ELEMENT 30
16	ADAPTER FLANGE 30
16	ANGLE BRACKET 30 S
17	ANGLE BRACKET 30 F/S
17	ANGLE BRACKET 30 F
18	STRIP BRUSH 30
18	ADAPTER G32 / G32
19	ADAPTER G32 / 30 X 30
19	ADAPTER 30 X 30 / G32
20	CLAMP FOR TRANSPORTATION
20	HANDLE 120 ESD, BLACK
21	INTERNAL ANGLE FOR FOLDING DOORS 45
22	LINEARSYSTEM LMS

ABOUT US



The Company

MiniTec was founded on the sales of miniature linear guides and has successfully evolved into designing complete machines and devices for many industrial processes around the world.

The Production Program

Our linear technology combined with the Profile System is the ideal partnership for machine builders.

The components work together to provide optimum performance and the modular assembly system makes it possible to design and manufacture to unique specifications quickly and cost effectively.



The Quality

To meet the demands of linear technology precision and exceed quality expectations, we invest in the latest machines and newest technologies and manufacturing techniques. Our quality management has been certified according to ISO 9001 since 1994.

The Environment

Our company mission stresses an active role in environmental protection and the conservation of our natural resources. As an example our service partners are located in close proximity to our customers to avoid long transits. Our environment management system is certified according to ISO 14001.



The Occupational Health and Safety

Since 2006 our company is certified with the OHSAS 18001 – Occupational Health and Safety Assessment Series.

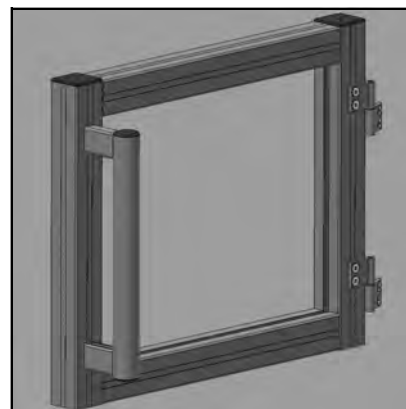
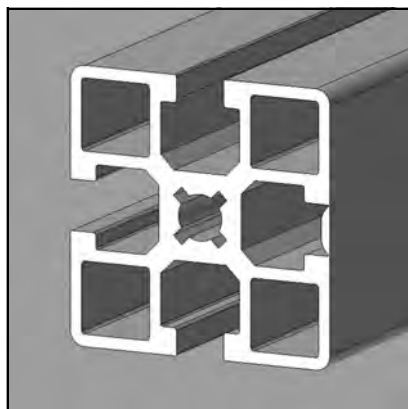
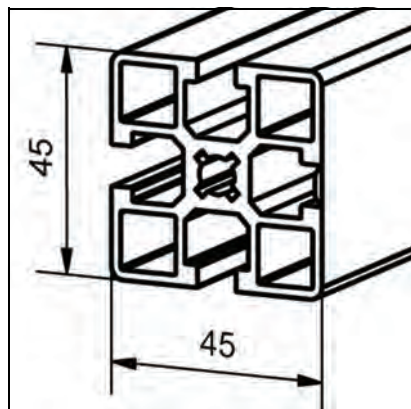


The Innovation

For us innovation is more than just new products. All our processes are constantly optimized. Continuous training of our staff and close cooperation with research and education facilities are the base for a steady innovation process.

PROFILE 45 X 45 1G

Part. N° 20.1126/0



TECHN. DATA / ITEMS SUPPLIED

- I _x =	13,617 cm ⁴
- I _y =	14,091 cm ⁴
- W _x =	6,052 cm ³
- W _y =	6,262 cm ³
- Weight	1,897 kg/m
- Length	6 m
- Packing unit	36 m

APPLICATIONS

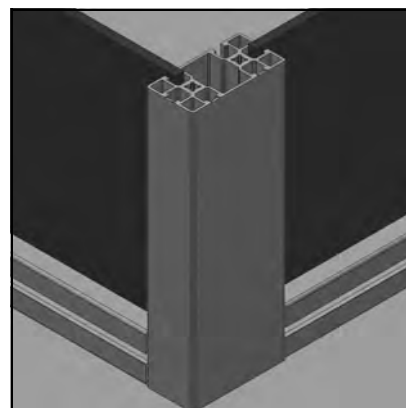
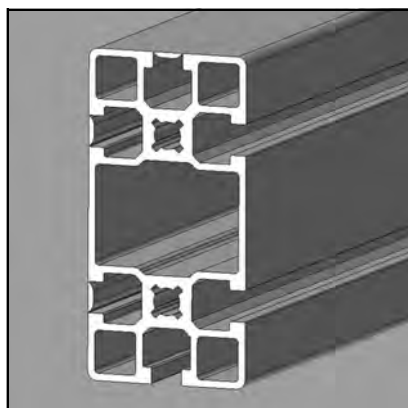
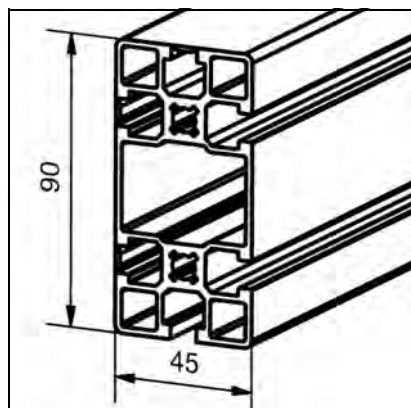
- Grooves can be teared off
- General structures, particularly for use in the food industry, in medical engineering and for the filling of beverages, where strict hygienic standards are set
- Grooves can be closed with the aluminium cover profile L, **Part N° 20.1021/0**, when they turn out to be too big
- On request we offer silicon sealings for profile connections

ASSEMBLY

- For tightening the power-lock fastener, the groove cover must be opened with tear-off lever **Part N° 26.0815/0** by 30-33 mm at the profile end
- Cover opened grooves with end cap G **Part N° 22.1056/0**
- Angle 25 / 45

PROFILE 45 X 90 2G

Part. N° 20.1081/0



TECHN. DATA / ITEMS SUPPLIED

- I _x =	98,137 cm ⁴
- I _y =	24,317 cm ⁴
- W _x =	21,808 cm ³
- W _y =	10,807 cm ³
- Weight	3,108 kg/m
- Length	6 m
- Packing unit	24 m

APPLICATIONS

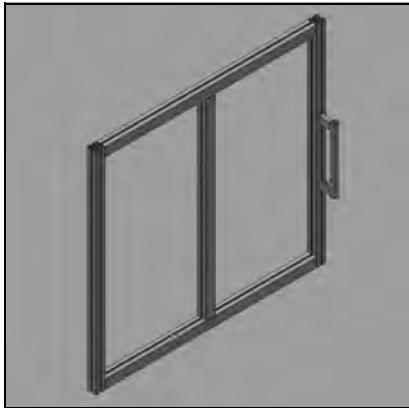
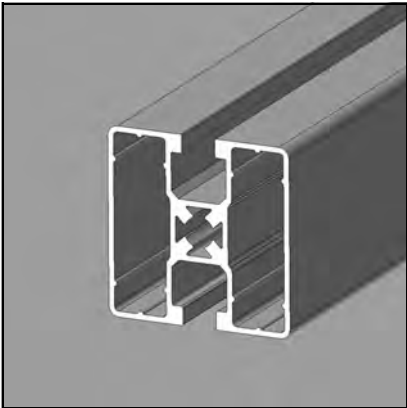
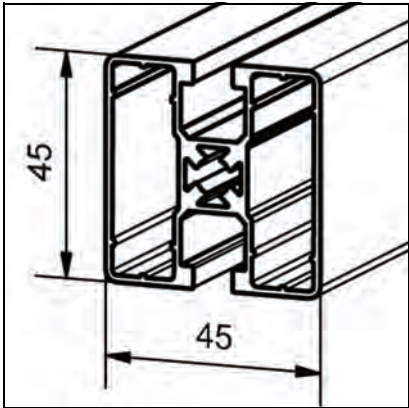
- Grooves can be teared off
- General constructions, particularly for use in the food industry, in medical engineering and for the filling of beverages, where strict hygienic standards are set
- The central cavity is constructed for guiding counterweights

ASSEMBLY

- MiniTec power-lock fastener
- 3 closed grooves can be opened up to any length with the tear-off lever **Part N° 26.0815/0**

PROFILE 45 X 45 UL 2GG

Part. N° 20.1122/0



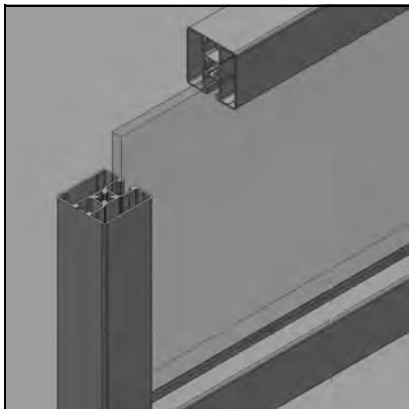
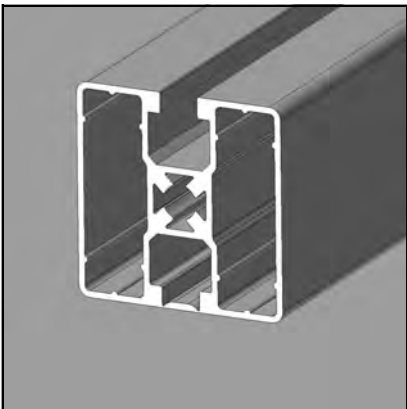
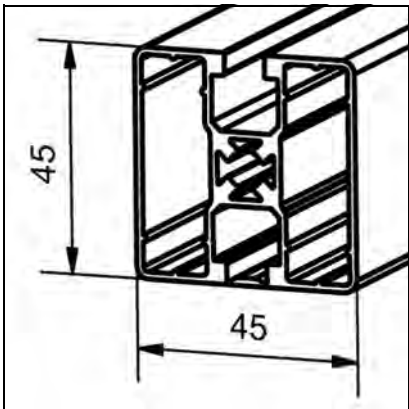
TECHN. DATA / ITEMS SUPPLIED	
- lx =	9,974 cm ⁴
- ly =	8,553 cm ⁴
- wx =	4,432 cm ³
- wy =	3,801 cm ³
- Weight	1,254 kg/m
- Length	6 m
- Packing unit	54 m

APPLICATIONS
- General weight, optimized engineering structures
- General constructions, particularly for use in the food industry, in medical engineering and for the filling of beverages, where strict hygienic standards are set
- On request we offer silicon sealings for profile connections

ASSEMBLY
- MiniTec power-lock fastener
- Angle 19 / 25 / 45 / 45 x 90
- Bolt-fastener 20
- Screw connection

PROFILE 45 X 45 UL 3G

Part. N° 20.1123/0



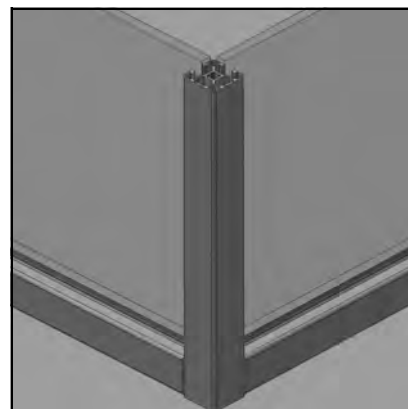
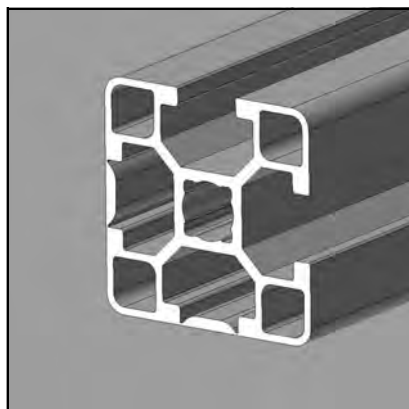
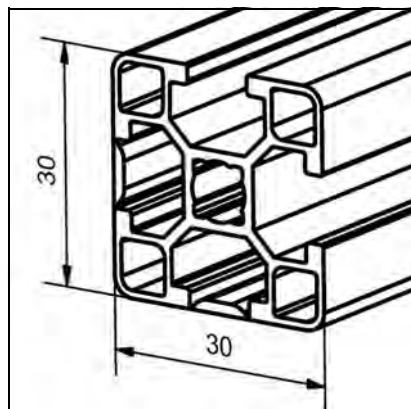
TECHN. DATA / ITEMS SUPPLIED	
- lx =	10,44 cm ⁴
- ly =	8,557 cm ⁴
- wx =	4,64 cm ³
- wy =	3,803 cm ³
- Weight	1,281 kg/m
- Length	6 m
- Packing unit	54 m

APPLICATIONS
- General weight, optimized engineering structures
- General constructions, particularly for use in the food industry, in medical engineering and for the filling of beverages, where strict hygienic standards are set
- On request we offer silicon sealings for profile connections

ASSEMBLY
- MiniTec power-lock fastener
- Angle 19 / 25 / 45 / 45 x 90
- Bolt-fastener 20
- Screw connection

PROFILE 30 X 30 2G

Part. N° 20.1124/0



TECHN. DATA / ITEMS SUPPLIED

- I _x =	2,307 cm ⁴
- I _y =	2,324 cm ⁴
- W _x =	1,538 cm ³
- W _y =	1,549 cm ³
- Weight	0,695 kg/m
- Length	6 m
- Packing unit	54 m

APPLICATIONS

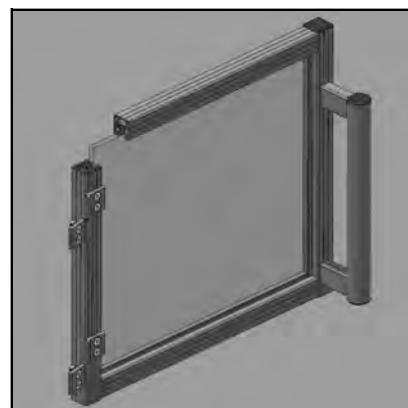
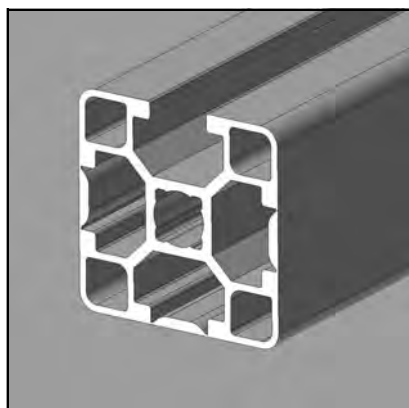
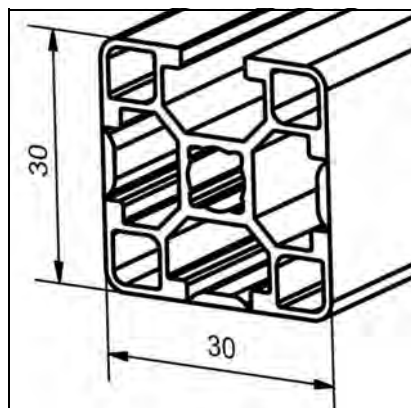
- Light structures, holders, protective devices
- Particularly for use in the food industry, in medical engineering and for the filling of beverages, where strict hygienic standards are set
- Suitable end cap: **Part. N° 22.1146/1**

ASSEMBLY

- MiniTec Power-lock Fastener 30, **Part. N° 21.0014/0**
- MiniTec Power-lock Fastener N30, **Part. N° 21.0033/0**
- Screw connection 30 N **Part. N° 21.1385/0**
- Angle 30 GD **Part. N° 21.1347/0**
- Attached parts can be fastened using MiniTec square nuts 30

PROFILE 30 X 30 3G

Part. N° 20.1085/0



TECHN. DATA / ITEMS SUPPLIED

- I _x =	2,321 cm ⁴
- I _y =	2,537 cm ⁴
- W _x =	1,547 cm ³
- W _y =	1,691 cm ³
- Weight	0,722 kg/m
- Length	6 m
- Packing unit	54 m

APPLICATIONS

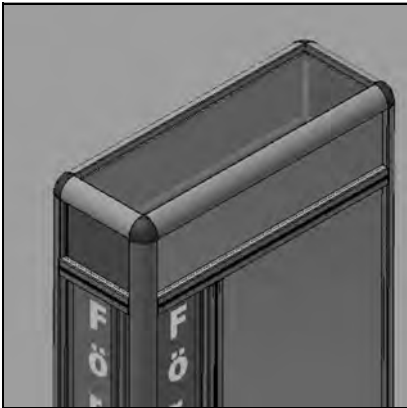
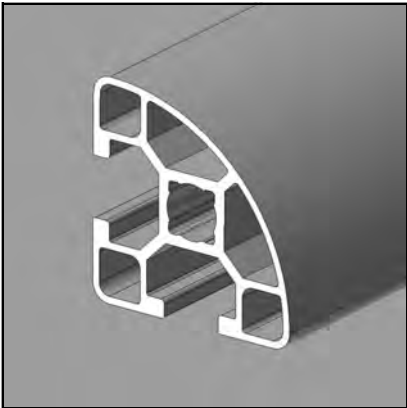
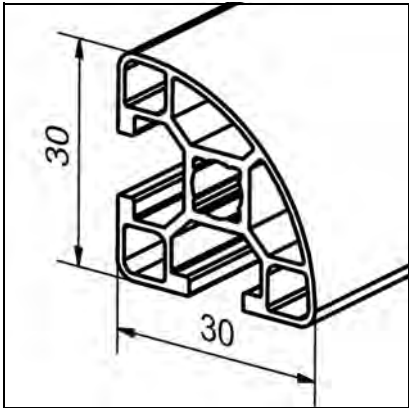
- Light structures, holders, protective devices
- Particularly for use in the food industry, in medical engineering and for the filling of beverages, where strict hygienic standards are set
- Suitable end cap: **Part. N° 22.1146/1**

ASSEMBLY

- MiniTec Power-lock Fastener 30, **Part. N° 21.0014/0**
- MiniTec Power-lock Fastener N30, **Part. N° 21.0033/0**
- Screw connection 30 N **Part. N° 21.1385/0**
- Angle 30 GD **Part. N° 21.1347/0**
- Attached parts can be fastened using MiniTec square nuts 30

PROFILE 30 R 90°

Part. N° 20.1125/0



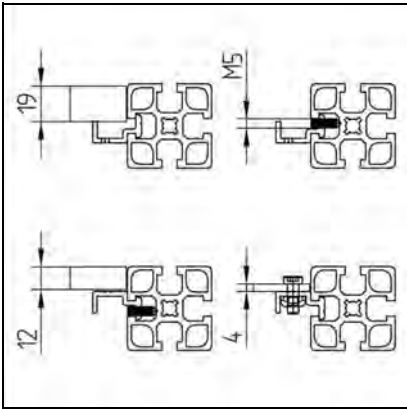
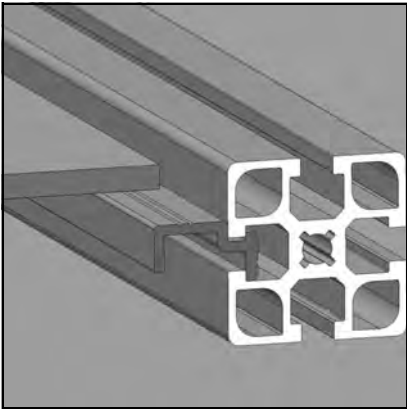
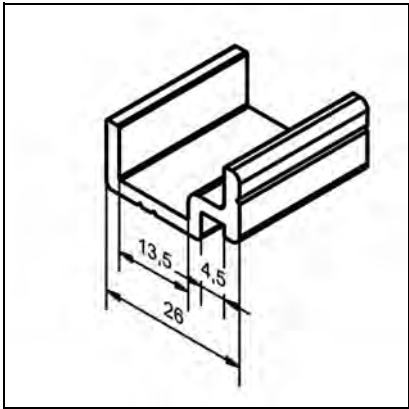
TECHN. DATA / ITEMS SUPPLIED	
- Ix =	1,233 cm ⁴
- Iy =	2,022 cm ⁴
- wx =	0,822 cm ³
- wy =	1,348 cm ³
- Weight	0,580 kg/m
- Length	6 m
- Packing unit	54 m

APPLICATIONS
- Light construction
- Tables
- Racks
- Framework constructions
- Suitable end cap: Part. N° 22.1144/1

ASSEMBLY
- MiniTec power-lock fastener 30
- Angle 30 R 90°

SUPPORT PROFILE

Part. N° 20.1121/0



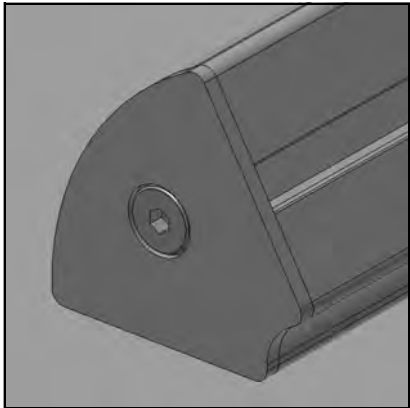
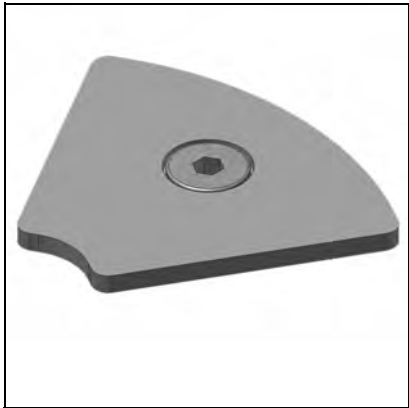
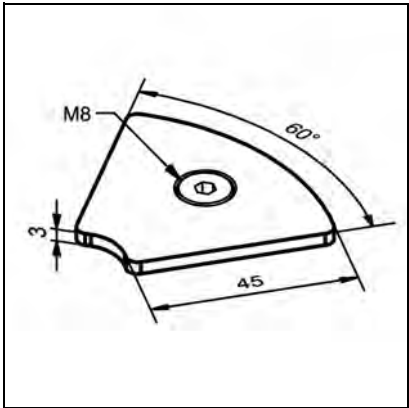
TECHN. DATA / ITEMS SUPPLIED	
- Aluminium, natural anodized	
- Weight	0,339 kg/m
- Length	6 m
- Packing unit	60 m

APPLICATIONS
- All types of safety equipment
- For installation of surface elements such as wire mesh, panes and plates up to a thickness of 19 mm.
- Subsequent insertion

ASSEMBLY
- Swivel support profile in groove
- Surface element: clear opening -2 mm

END CAP 45 R 60° ALU

Part. N° 22.1018/2



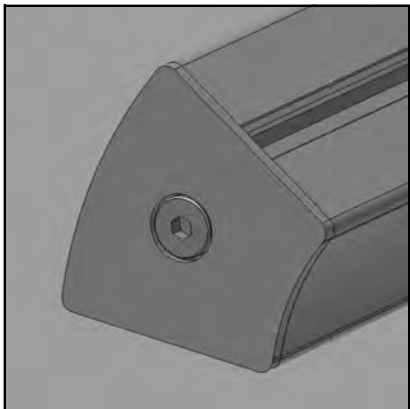
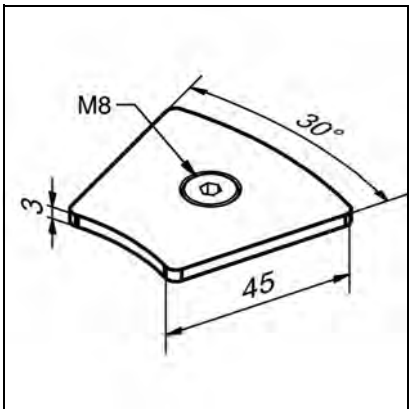
TECHN. DATA / ITEMS SUPPLIED	
- Aluminium, natural anodized	
- Fastening kit	
- Weight	0,054 kg

APPLICATIONS
- Face covering of profiles
- Fastening by pan head screw Part. N° 21.1666/0

ASSEMBLY
- Screw on end cap with pan head screw Part. N° 21.1666/0

END CAP 45 R 30° ALU

Part. N° 22.1019/2



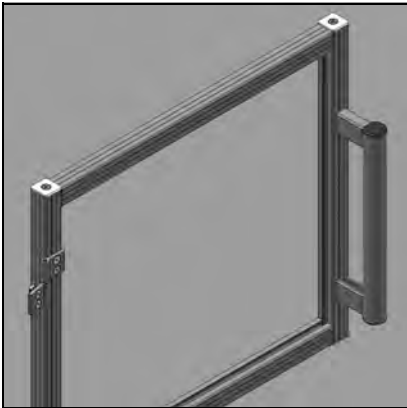
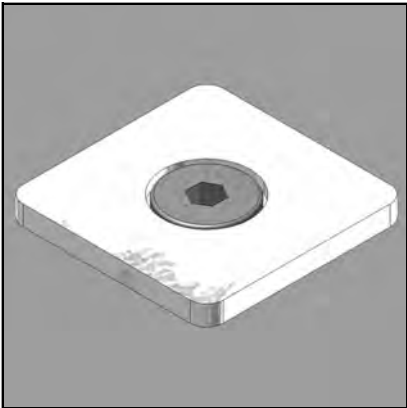
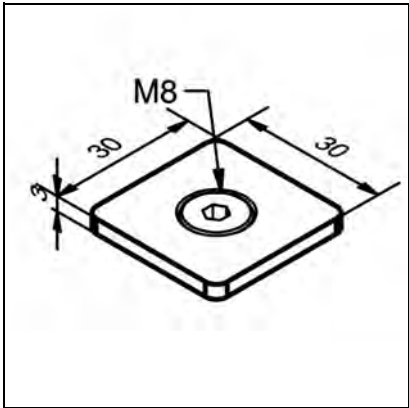
TECHN. DATA / ITEMS SUPPLIED	
- Aluminium, natural anodized	
- Fastening kit	
- Weight	0,054 kg

APPLICATIONS
- Face covering of profiles
- Fastening by pan head screw Part. N° 21.1666/0

ASSEMBLY
- Screw on end cap with pan head screw Part. N° 21.1666/0

END CAP 30 X 30 ALU

Part. N° 22.1149/2



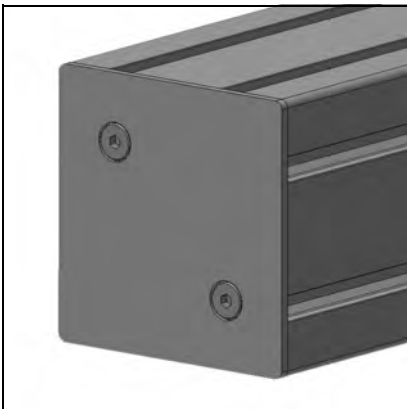
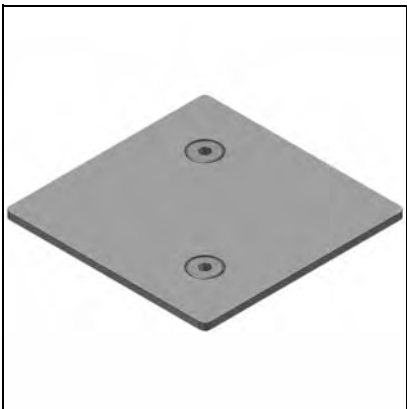
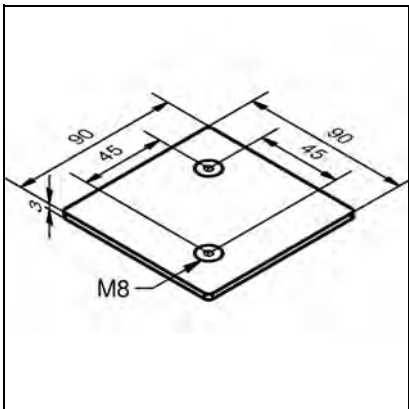
TECHN. DATA / ITEMS SUPPLIED	
- Aluminium, natural anodized	
- Fastening kit	
- Weight	0,011 kg

APPLICATIONS
- Face covering of profiles
- Fastening by pan head screw Part. N° 21.1666/0

ASSEMBLY
- Screw on end cap with pan head screw Part. N° 21.1666/0

END CAP 90 X 90 ALU

Part. N° 22.1008/2



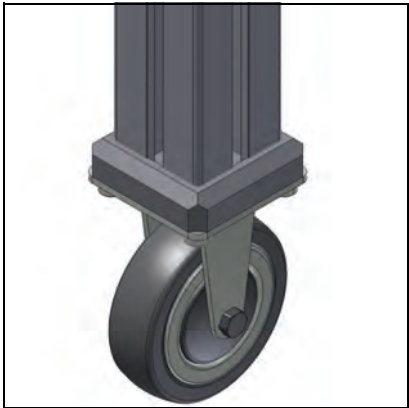
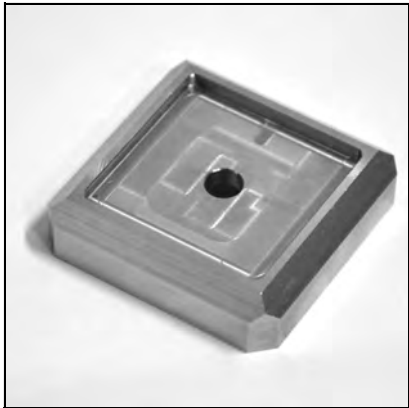
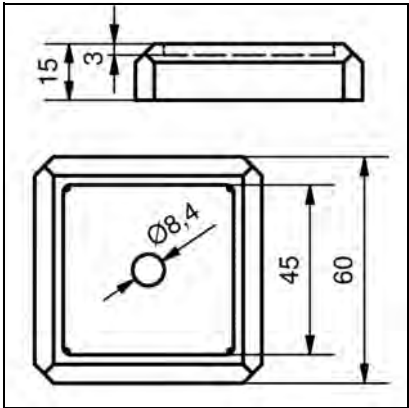
TECHN. DATA / ITEMS SUPPLIED	
- Aluminium, natural anodized	
- Fastening kit	
- Weight	0,072 kg

APPLICATIONS
- Face covering of profiles
- Fastening by pan head screws Part. N° 21.1666/0

ASSEMBLY
- Screw on end cap with pan head screws Part. N° 21.1666/0

FIXING PLATE 45 VA FOR FIXED CASTORS

Part. N° 21.2058/0



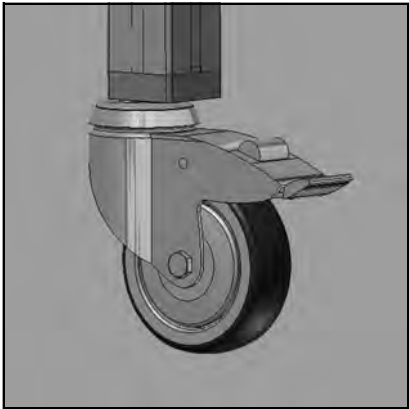
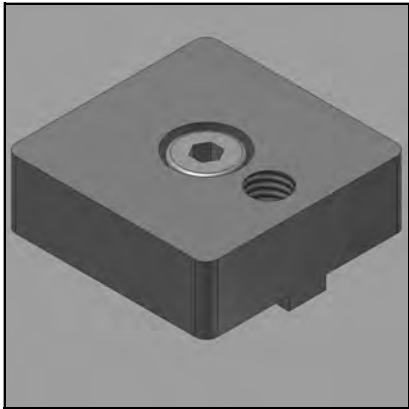
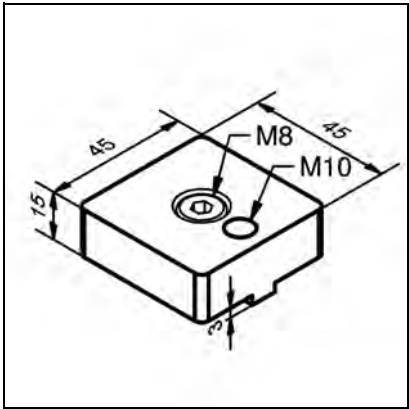
TECHN. DATA / ITEMS SUPPLIED	
- Stainless steel	
- Fastening kit	
- Weight	0,36 kg

APPLICATIONS	
- Profile 45 x 45	
- Profile 45 x 45 VA	
- For fastening of fixed castors on profile face 45 x 45 and 45 x 45 VA	

ASSEMBLY	
- Connect with fastening kit on profile face	

BASE AND TRANSPORT PLATE 45X45 VA M10

Part. N° 21.2059/0



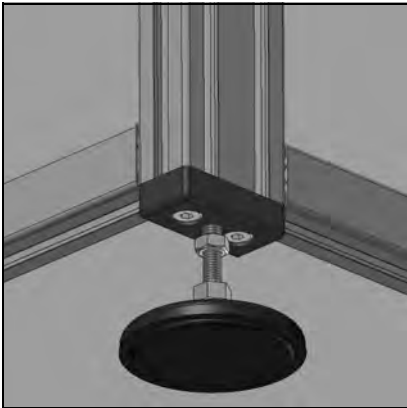
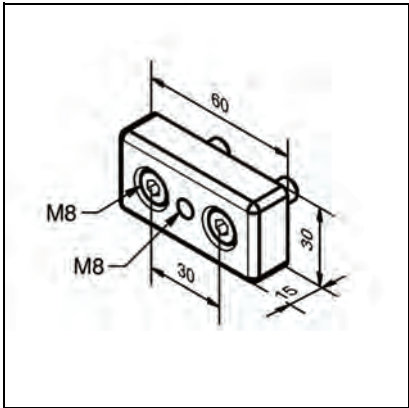
TECHN. DATA / ITEMS SUPPLIED	
- Stainless steel	
- Fastening kit	
- Weight	0,23 kg

APPLICATIONS	
- Profile 45 x 45	
- Profile 45 x 45 VA	
- Height compensation for mounting of swivel castors in combination with fixed castors	
- For using adjustable feet M10	

ASSEMBLY	
- Connect with fastening kit on profile face	

BASE AND TRANSPORT PLATE 30X60 M08

Part. N° 21.2114/0



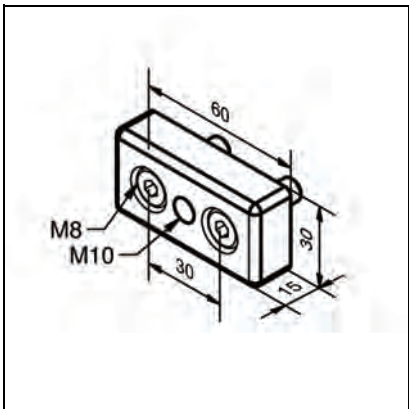
TECHN. DATA / ITEMS SUPPLIED	
- Aluminium, powder coated, grey	
- Fastening kit	
- Weight	0,085 kg

APPLICATIONS
- For using adjustable feet and swivel castors on profile series 30

ASSEMBLY
- Connect with fastening kit enclosed

BASE AND TRANSPORT PLATE 30X60 M10

Part. N° 21.2115/0



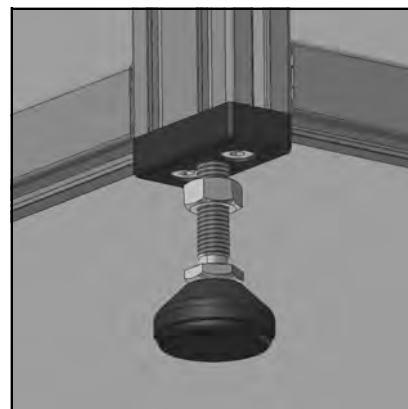
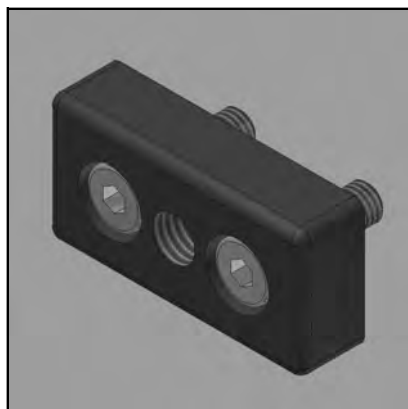
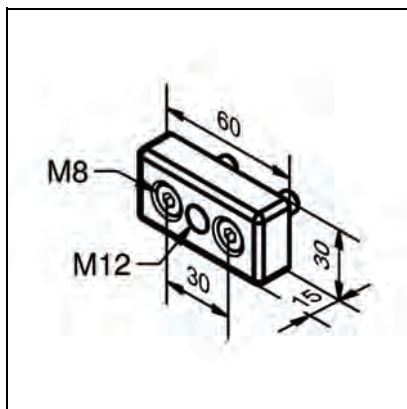
TECHN. DATA / ITEMS SUPPLIED	
- Aluminium, powder coated, grey	
- Fastening kit	
- Weight	0,084 kg

APPLICATIONS
- For using adjustable feet and swivel castors on profile series 30

ASSEMBLY
- Connect with fastening kit enclosed

BASE AND TRANSPORT PLATE 30X60 M12

Part. N° 21.2116/0



TECHN. DATA / ITEMS SUPPLIED

- Aluminium, powder coated, grey
- Fastening kit
- Weight 0,082 kg

APPLICATIONS

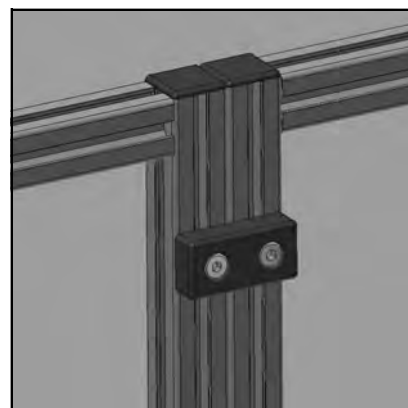
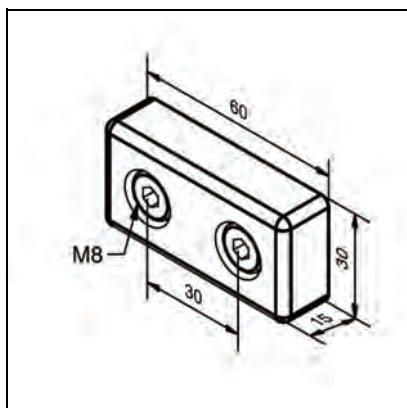
- For using adjustable feet and swivel castors on profile series 30

ASSEMBLY

- Connect with fastening kit enclosed

CONNECTING PLATE 30 X 60

Part. N° 21.2113/0



TECHN. DATA / ITEMS SUPPLIED / ITEMS SUPPLIED

- Aluminium GD, powder coated, grey
- Fastening kit
- Weight 0,085 kg

APPLICATIONS

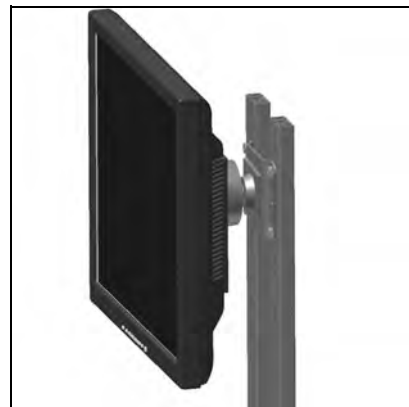
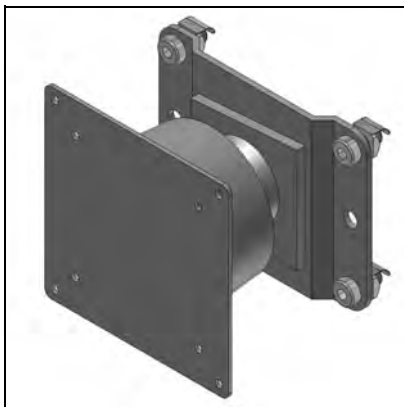
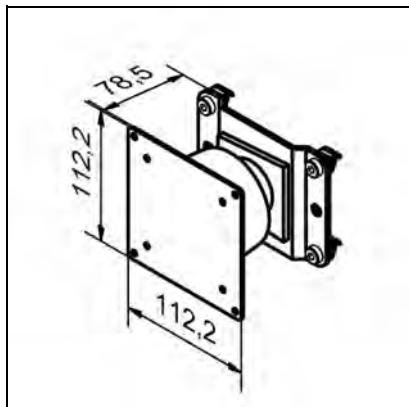
- Connection of two guards without gaps
- Strengthening of guard units
- Connection of premounted units or modules

ASSEMBLY

- Use fastening kit

MONITOR CARRIER DIGITUS

Part. N° 32.0053/0



TECHN. DATA / ITEMS SUPPLIED

- Steel, powder coated black
- Fastening kit
- Load capacity max. 15 kg
- Weight 0,772 kg

APPLICATIONS

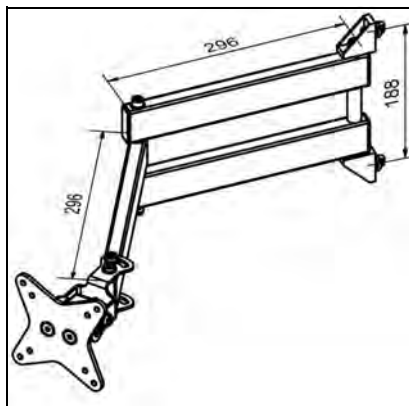
- Swivable with ball joint
- Monitor can be rotated through 180°

ASSEMBLY

- Fasten into profile groove with fastening kit enclosed

MONITOR CARRIER WITH HINGED BRACKET

Part. N° 32.0620/0



TECHN. DATA / ITEMS SUPPLIED

- Hinged bracket: aluminium anodized
- Fixing plate: steel, powder coated grey
- With double-joint swivelling arm
- Load capacity max. 12 kg
- Weight 1,6 kg

APPLICATIONS

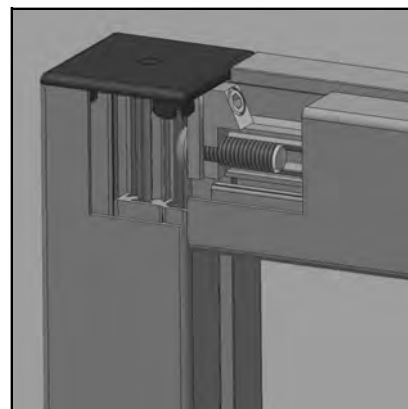
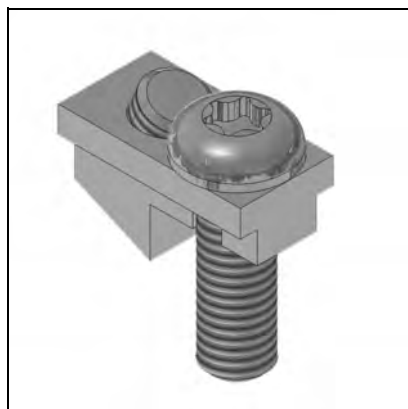
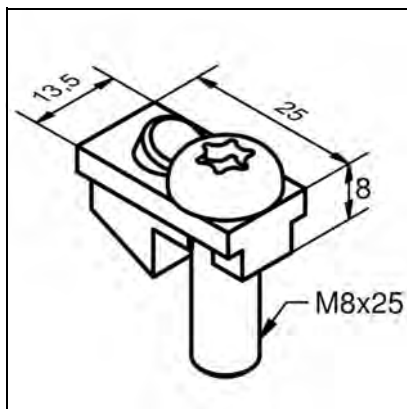
- Working place ergonomics
- Swivable out of working area
- Large swivelling range

ASSEMBLY

- Fasten into profile groove with fastening kit enclosed

POWER-LOCK FASTENER SF SHORT

Part. N° 21.0020/0



TECHN. DATA / ITEMS SUPPLIED

- 1 connecting element, zinc plated

- 1 fillister head screw M8 x 25

- Weight 0,03 kg

APPLICATIONS

- Power-lock connection for profiles series 45, also suitable for crossjoints

- Especially for connection of profiles with flush mounted end caps

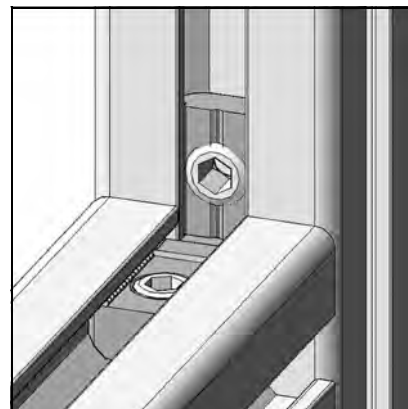
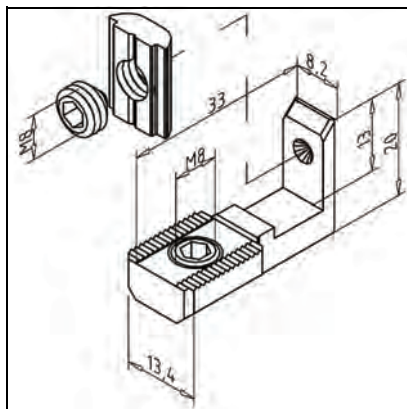
ASSEMBLY

- Mount fastener by hand onto profile face

- Tighten set screw M8 with key SW4

POWER-LOCK FASTENER N30

Part. N° 21.0033/0



TECHN. DATA / ITEMS SUPPLIED

- 1 Fastener N, zinc plated, with set screw M8 x 08

- 1 Slide nut M8 with set screw M8 x 06

- Weight 0,025 kg

APPLICATIONS

- For connection of profiles series 30

- Particularly for subsequent insertion of profiles into existing frames

ASSEMBLY

- Set profile with fastener in required position

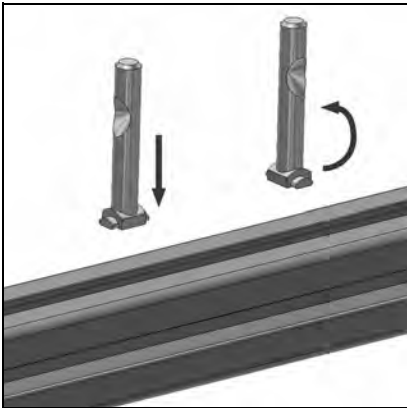
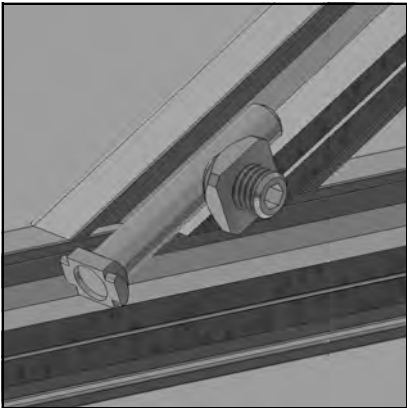
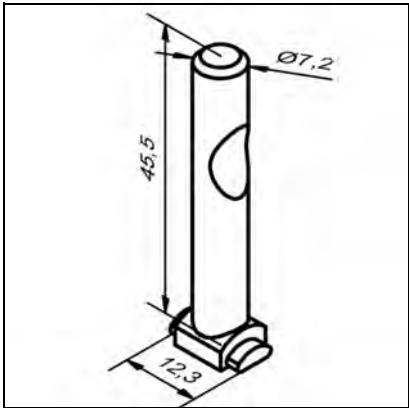
- Slide nut M8 over the L-shape end of the fastener and tighten with hex-key 4 A/F

- Tighten set screw M8 x 08 of fastener

- Recommended torque for both screws: 10 Nm

MITRE CONNECTOR N30

Part. N° 21.0945/0



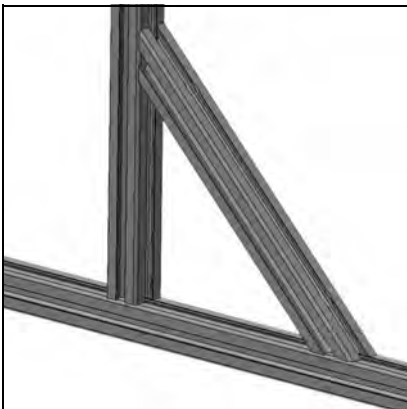
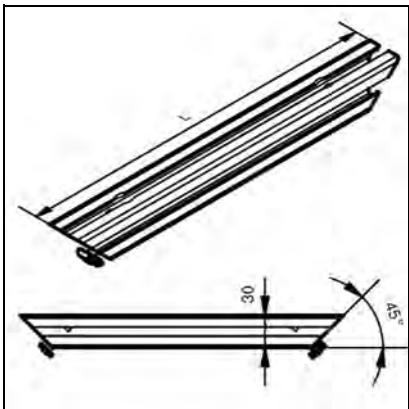
TECHN. DATA / ITEMS SUPPLIED	
- Steel, zinc plated	
- Fastening kit	
- Weight	0,022 kg

APPLICATIONS
- Mitre connection of profiles on profile groove, for profiles series 30
- For subsequent fitting in the groove

ASSEMBLY
- Insert mitre connector N30 into groove and core bore
- Use drilling jig for mitre connector N30 Part. N° 26.1056/0

STRENGTHENING ELEMENT 30

Part. N° 21.2110/0



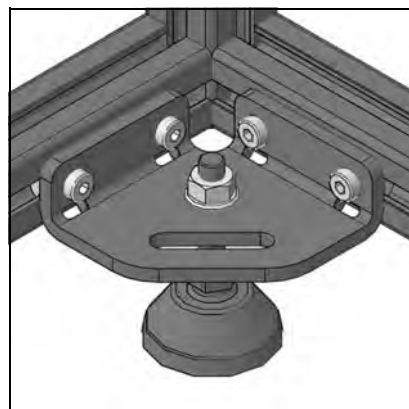
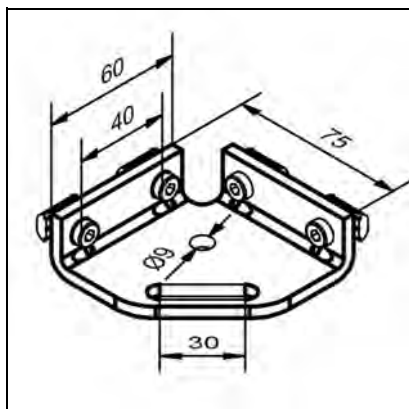
TECHN. DATA / ITEMS SUPPLIED	
- Profile 30 x 30, ready for use	
- Both ends cut at 45° with counter-bores for fastening kit	
- Fastening kit	
- Weight	0,213 kg
- Length	300 mm

APPLICATIONS
- Reinforcement of constructions in half-timbered principle

ASSEMBLY
- Screw onto profile groove, use the fastening kit

ADAPTER FLANGE 30

Part. N° 21.2120/0



TECHN. DATA / ITEMS SUPPLIED

- Steel, powder coated grey
- Fastening kit
- Weight 0,261 kg

APPLICATIONS

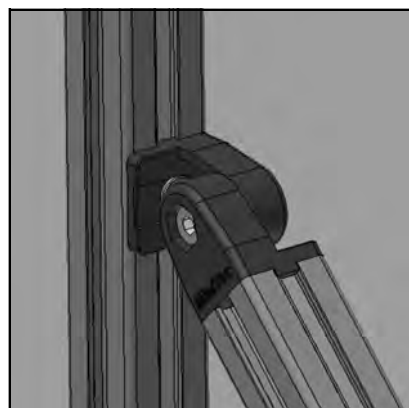
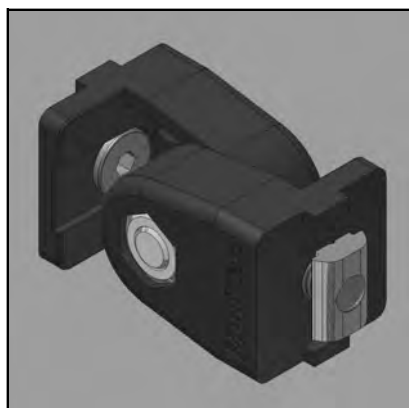
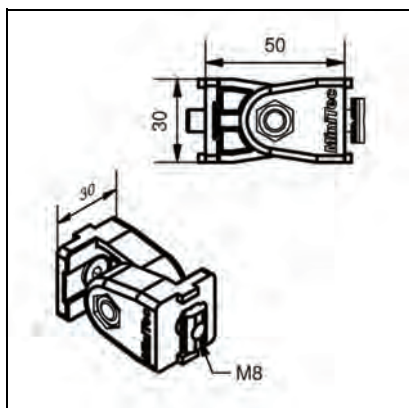
- Strengthening of constructions of profiles series 30
- Attachment of internal feet
- Floor mounting and levelling of frames

ASSEMBLY

- Screw onto profile groove, use the fastening kit

ANGLE BRACKET 30 S

Part. N° 21.2106/0



TECHN. DATA / ITEMS SUPPLIED

- Aluminium GD, powder coated, grey
- Fastening kit
- Mounting: both sides on profile face
- Locking device against torsion
- Weight 0,087 kg

APPLICATIONS

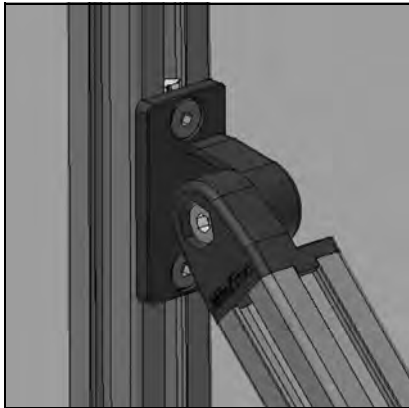
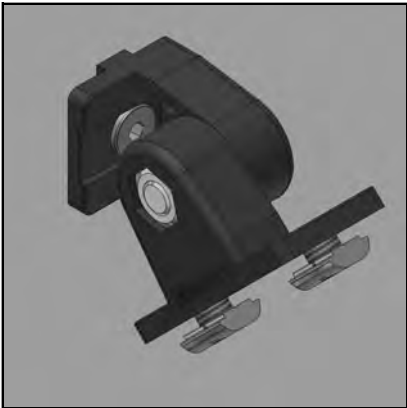
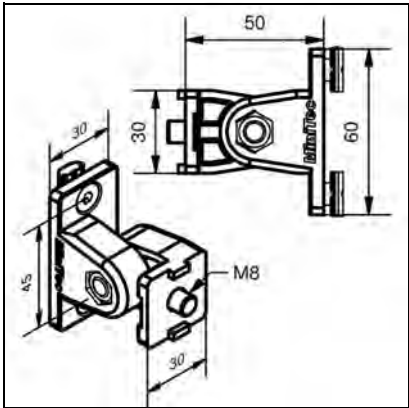
- Connection of profiles series 30 at any angle
- Subsequent insertion of profiles into existing frames

ASSEMBLY

- First part of hinge to be mounted on profile face
- Second part of hinge to be mounted on frame
- Screw both parts together on hinge point

ANGLE BRACKET 30 F/S

Part. N° 21.2105/0



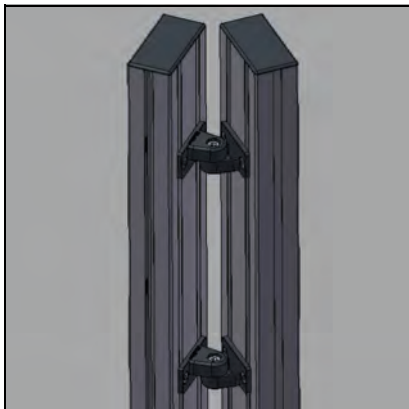
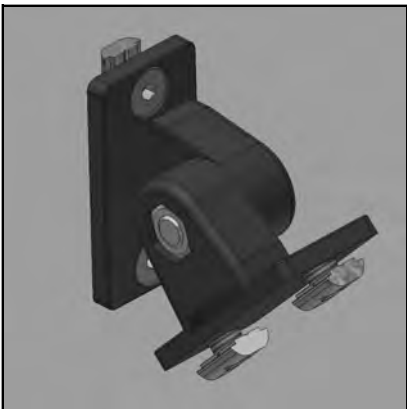
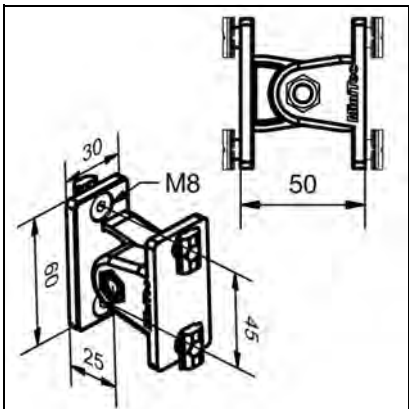
TECHN. DATA / ITEMS SUPPLIED	
- Aluminium GD, powder coated, grey	
- Fastening kit	
- Mounting: one side on profile face and one side on profile groove	
- Locking device against torsion	
- Weight	0,105 kg

APPLICATIONS
- Connection of profiles series 30 at any angle
- Subsequent insertion of profiles into existing frames

ASSEMBLY
- First part of hinge to be mounted on profile face
- Mounting of brace on frame

ANGLE BRACKET 30 F

Part. N° 21.2111/0



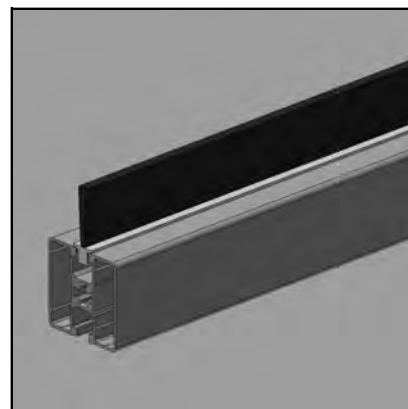
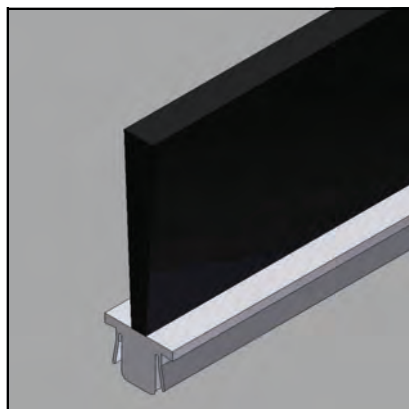
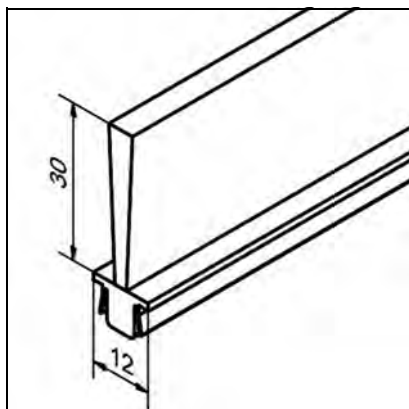
TECHN. DATA / ITEMS SUPPLIED	
- Aluminium GD, powder coated, grey	
- Fastening kit	
- Mounting: both sides on profile groove	
- Locking device against torsion	
- Weight	0,126 kg

APPLICATIONS
- Connection of profiles series 30 at any angle
- Subsequent insertion of profiles into existing frames

ASSEMBLY
- Fastening of hinges on profile groove
- Screw both parts together on hinge point

STRIP BRUSH 30

Part. N° 22.1150/0

**TECHN. DATA / ITEMS SUPPLIED**

- P.V.C. strip with brush	
- Weight	0,130 kg/m

APPLICATIONS

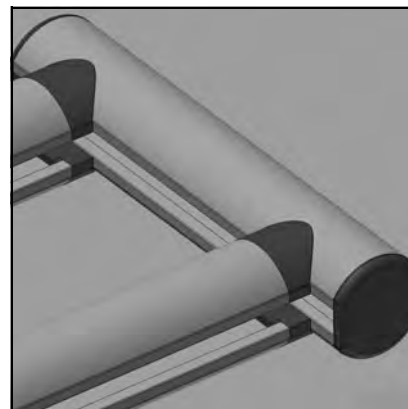
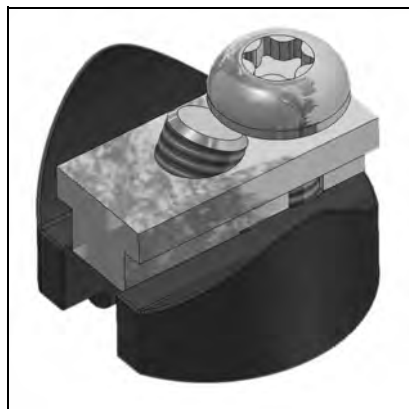
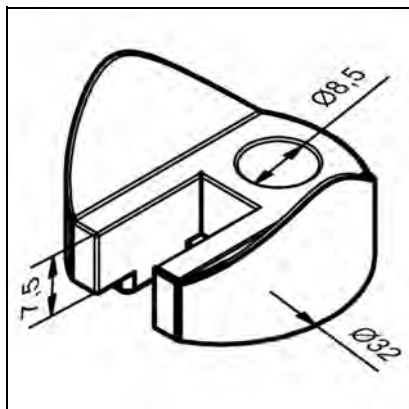
- Sealing of doors, lids
- Static cleaning of belts
- Guiding and supporting in conveyance

ASSEMBLY

- Insert or clip into profile groove

ADAPTER G32 / G32

Part. N° 21.0954/0

**TECHN. DATA / ITEMS SUPPLIED**

- Aluminium GD, powder coated, grey	
- Fastening kit	
- Weight	0,041 kg

APPLICATIONS

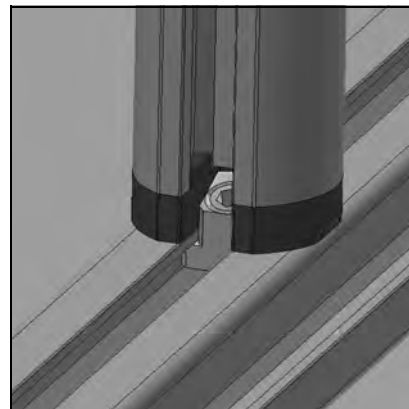
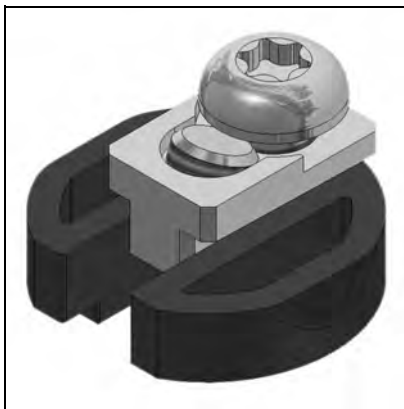
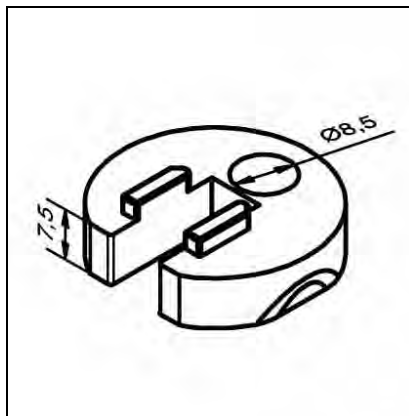
- For connection of handle profile 32 with handle profile 32

ASSEMBLY

- Screw on profile face and fasten with power-lock fastener

ADAPTER G32 / 30 X 30

Part. N° 21.0955/0

**TECHN. DATA / ITEMS SUPPLIED**

- Aluminium GD, powder coated, grey
- Fastening kit
- Weight 0,032 kg

APPLICATIONS

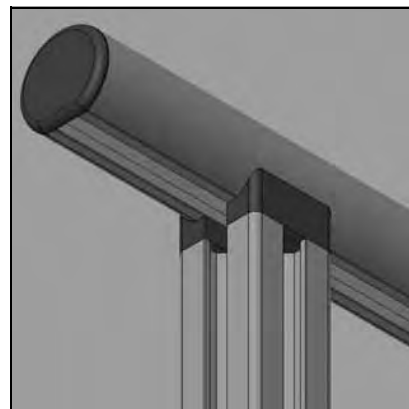
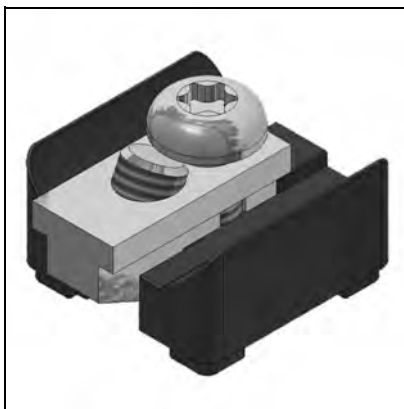
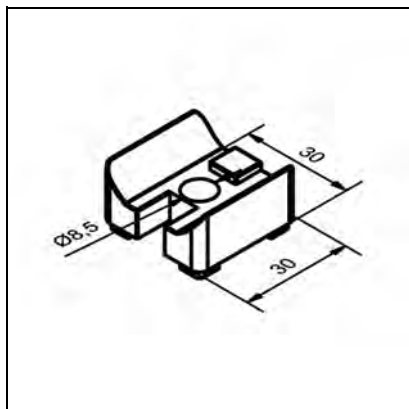
- For connection of handle profile 32 with profile 30 x 30

ASSEMBLY

- Screw on profile face and fasten with power-lock fastener

ADAPTER 30 X 30 / G32

Part. N° 21.0953/0

**TECHN. DATA / ITEMS SUPPLIED**

- Aluminium GD, powder coated, grey
- Fastening kit
- Weight 0,046 kg

APPLICATIONS

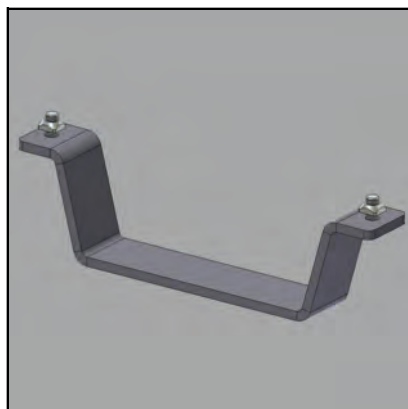
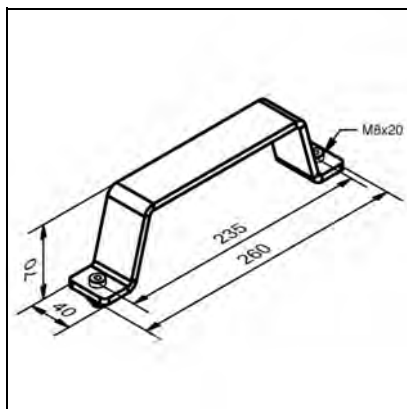
- For connection of profile 30 x 30 with handle profile 32

ASSEMBLY

- Screw on profile face and fasten with power-lock fastener

CLAMP FOR TRANSPORTATION

Part. N° 26.1101/0



TECHN. DATA / ITEMS SUPPLIED

- 1 (one) clamp
- Steel, zinc plated
- Fastening kit
- Weight 0,708 kg

APPLICATIONS

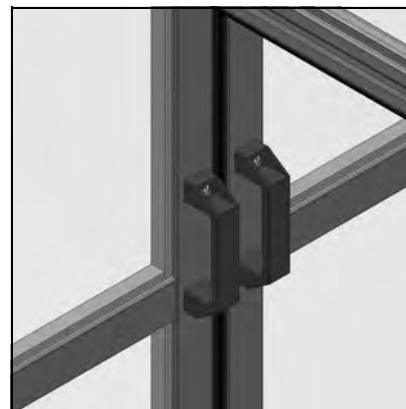
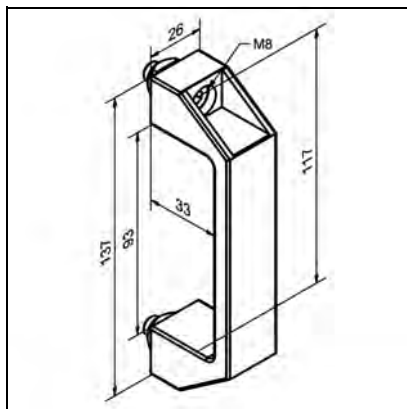
- For fixation of goods during transport with forklift

ASSEMBLY

- Fastening on bottom side of construction with fastening kit
- Use always in pairs

HANDLE 120 ESD, BLACK

Part. N° 32.1007/0



TECHN. DATA / ITEMS SUPPLIED

- ABS, conductive
- Fastening kit
- Weight 0,073 kg

APPLICATIONS

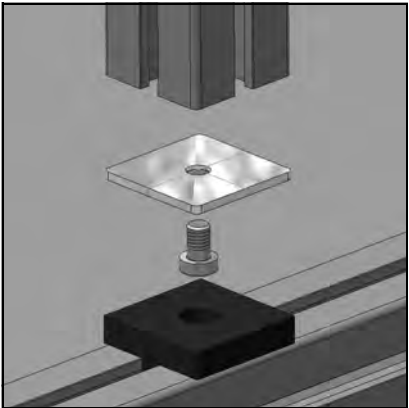
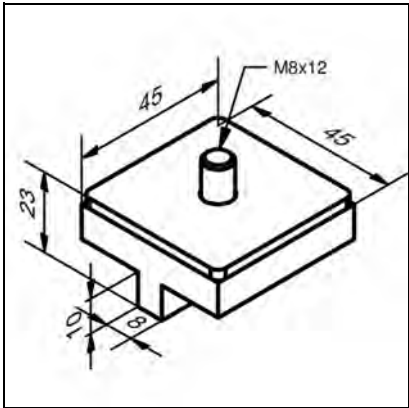
- Doors
- Lids
- Guards

ASSEMBLY

- Use fastening kit
- Directly on panel element with hex socket cap screw M8, length according to material thickness
- Assembly can also be carried out from the rear side

INTERNAL ANGLE FOR FOLDING DOORS 45

Part. N° 22.1148/0



TECHN. DATA / ITEMS SUPPLIED	
- 2 (two) slide elements: plastic, black	
- Fastening screws M8 and end caps 45x45 AL	
- Weight	0,084 kg

APPLICATIONS
- Slide element for guiding of folding doors
- Guiding in profile grooves

ASSEMBLY
- Mounting of end caps with delivered fastening screws on front of door profile
- Insert slide elements into the profile grooves
- Insert mounted screws in the drill hole of slide element
- Use always in pairs

THE NEW LINEARSYSTEM LMS



*Linearmodule LMS T 16x4 G
with guide and spindle*

THE NEW 3-AXIS-ADJUSTING UNIT LMS IS DESIGNED FOR HIGH DEMANDS ON ACCURACY AND LOAD CAPACITY WHILST FITTING INTO A MINIMAL INSTALLATION SPACE.

AVAILABLE IN TWO VERSIONS

- three-phase asynchronous motor with transmitter feedback for standard positioning works.

Motor power: 0,18 kW / motor rpm 1320

- synchronous-servomotor for efficient, dynamical applications

Motor torque: 2,4 Nm / input speed 6000 rpm

Both motor types are driven with the latest generation of drive unit converters, the MOVIDRIVE MDX61B.

SPECIFICATION:

- Compact carrier profile 90x90 with standard profile grooves, compatible with all MiniTec construction profiles
- Completely closed module, guide groove covered with VA steel strip
- Guides and spindle easily accessible due to removable cover profiles
- Special grooves for internal or external attachment of position detection sensors
- External switches can be easily mounted on the side profile grooves
- Slides made of aluminium, precision machined all over, prepared for attachments with 4 or 6 connection threads M8 with 45 mm spacing
- Travel distance up to 1800 mm
- 2 bearing units with precision ball bearings, lifetime lubricated, prepared for motor attachment with Ø 10 mm pins
- Optional version with keyway or adapter plate machined according to motor specification

GUIDE OPTIONS:

- High load linear rail guides, size 15 with permanent lubrication units, operational performance 10,000 km
- Plastic slide ways, size 15 for very economic applications

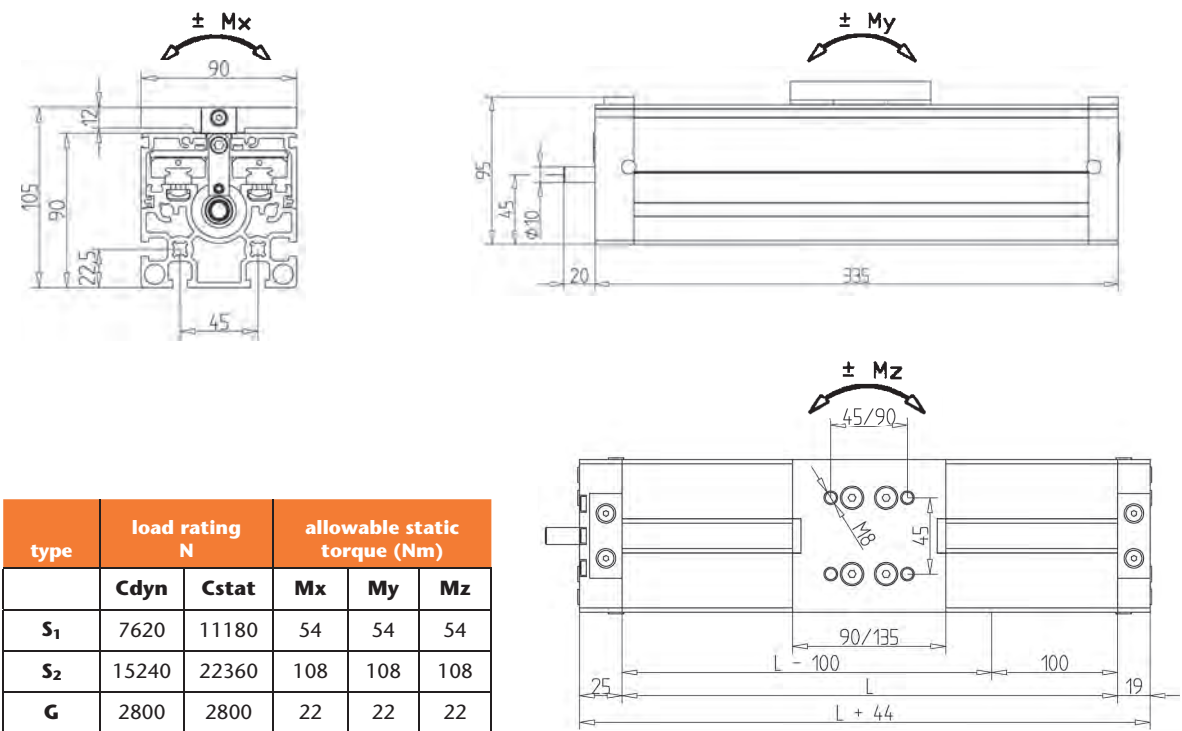
DRIVE OPTIONS:

- Ball screw, tolerance class T7, right-hand thread, maximum axial play 0.04 mm, repeatability 52 µm/300 mm
- Trapezoidal thread spindle 16x4, optionally pre-loaded with increased accuracy

EASY INTEGRATION TO:

- PROFIBUS-SYSTEM
- PROFIBUS-SYSTEM WITH PROFISAFE
- ETHERNET-SYSTEM
- ETHERNET-SYSTEM WITH PROFISAFE
- ETHERCAT-SYSTEM

*Synchronous-motor**Asynchronous-motor**Drive unit converter MOVIDRIVE MDX61B*



type	drive variants	guide	Part. N°	max. movement speed	slide length	max. stro- ke length
LMS	T 16x4	G	28.1001/0	0.03 m/s	135 mm	1800 mm
LMS	K 16x5	S ₁ /S ₂	28.1000/0	0.5 m/s	90 mm	1347 mm
LMS	K 16x10	S ₁ /S ₂	28.1000/1	1.0 m/s	90 mm	1347 mm
LMS	K 16x16	S ₁ /S ₂	28.1000/2	1.6 m/s	90 mm	1347 mm

DELIVERY FORMS:

- T Trapezoidal thread spindle
- K Ball screw
- G 2 slide ways with 4 slides, size 15
- S₁ 2 rail guide tracks with 2 slides, size 15
- S₂ 2 rail guide tracks with 4 slides, size 15
- L total length (stroke length + slide length + 55 cm)
- H stroke length max.

ORDER ADVICES:

Please indicate **Part.-N°** and **stroke length** required – or **total length L**.
(xx.xxxx/x + **stroke length or total length L**)

For further information or product support, please call our service team on
+49 (0)6373 8127-0 | info@minitec.de

MINITEC LOCATIONS

MiniTec GmbH & Co. KG

MiniTec Allee 1 | D-66901 Schönenberg-Kübelberg
Telefon +49 (0)6373 81270 | Fax +49 (0)6373 812720
info@minitec.de | www.minitec.de

MiniTec GmbH & Co. KG

Fürther Straße 33 | D-90513 Zirndorf
Telefon +49 (0)911 2789000 Fax +49 (0)911 27890099
zirndorf@minitec.de | www.minitec.de

MiniTec Schweiz AG

Industriestraße 19 | CH-8112 Otelfingen
Telefon +41 (0)44575 1500 | Fax +41 (0)44575 1501
info@minitec.ch | www.minitec.ch

MiniTec S.N.C

2, rue Charles Desgranges | F-57214 Sarreguemines
Telefon +33 (0)3 87276870 | Fax +33 (0)3 87276877
info@minitec.fr | www.minitec.fr

MiniTec UK Ltd.

Unit 1 Telford Road | Houndsmill Industrial Estate
GB-RG16YU Basingstoke/Hampshire
Telefon +44 (0)1256 365605 | Fax +44 (0)1256 365606
info@minitec.co.uk | www.minitec.co.uk

MiniTec Framing System LLC

100 Rawson Road, Suite 228 | Victor, NY 14564 USA
Telefon +1 (0)585 9244690 | Fax +1 (0)585 9244821
sales@minitecframing.com | www.minitecframing.com

MiniTec España S.L.U.

C/ Carlos Jiménez Díaz, 7. Pol. Ind. La Garena
ES-28806 Alcalá de Henares, Madrid
Telefon +34 (0)91 6562652 | Fax +34 (0)91 6775304
info@minitec.es | www.minitec.es

MiniTec Slovakia

ul. Rabcicka 332 | SK-02944 Rabca
Telefon +421 (0)43 5524350 | Fax +421 (0)43 5524352
info@minitec-slovakia.sk | www.minitec-slovakia.sk

MiniTec Slovenia d.o.o

Grize 24a | SL-3302 Grize
Telefon +386 (0)590 71390 | Fax +386 (0)590 71399
info@minitec.si | www.minitec.si

Import Belgium & Luxembourg

Profilex s.a.

4A, Z.I. In den Allern Tel: 00352/99 89 06
L-9911 Troisvierges Fax: 00352/26 95 73 73

www.profilex-systems.com

profilex@pt.lu

MINITEC PRODUCT LINE

PROFILE SYSTEM



LINEAR SYSTEM



CONVEYORS



WORKPLACE SYSTEMS



MACHINE PROTECTION



TURN-KEY SOLUTIONS

